

# Cook





## A glass lid rice cooker in which you can see the flavor

By increasing the thickness of the glass lid rice cooker, we made fire adjustment unnecessary, which was said to be the difficult part of cooking rice over a direct flame. The whistle on the top of the lid will let you know when to stop the flame. Once it whistles, stop the heat and let it steam for 15 minutes. Using the steam heat stored in the glass lid rice cooker will draw out flavors from the rice. The lid is a heatproof glass. Being able to see the rice cook is exciting and also worry free. All parts are made in Japan. Use this glass lid rice cooker with a glass lid to enjoy the rice flavors from a direct flame, inherited from ancient times.



For open flames

Medium flame + steam for 15 minutes



### GNN-150B

C/T6 803848  
W210 • D174 • H190  
top opening diameter 150  
for 2 servings

High flame + steam for 15 minutes



### GNN-200B

C/T4 803831  
W270 • D230 • H210  
top opening diameter 200  
for 6 servings

Cross-sectional view



The thick bottom of the rice cooker will adjust the heat that is transferred to the rice.



## This rice kettle's rice bowl retains the flavor

Since the bowl has water-absorbing properties, it appropriately absorbs excess moisture from the rice, making a flavorful rice where you can see each separate grain. When reheating in the microwave, the water that was absorbed in the bowl gets released, forming a soft rice.



For microwave Do not expose to open flames



### GO-2B

C/T12 803824  
W190 • D190 • H87  
for 4 servings

Microwave safe



## An IH rice pan coated with a non-stick polymer keeps rice from sticking to the pan.

### Four-layer Structure + Non-stick Coating

The four-layer stainless steel and aluminum pan conducts heat evenly to cook delicious rice. Since the inside is coated with a non-stick polymer, rice hardly sticks to the pan. The pan can be used for simmered dishes as well.



Compatible with open flames and induction heating

Low heat + let cooked rice sit for 15 minutes after turning off the heat



### GIS-200

C/T4 803992  
 W 260 • D 216 • H 200  
 top opening diameter 208  
 full capacity 2,800ml  
 for 6 servings



## This earthen pot, large in capacity, is easy to use

With the basic, modern potter's wheel look, it is good for cooking at the dining table. The lid is made of heatproof glass allowing ingredients to be seen. It is suitable for everyday use.



For open flames



For microwave



### MNN-165-B

C/T12 803756  
W 210 · D 188 · H 123  
top opening diameter 165  
full capacity 900ml



### MNN-225-B

C/T6 803763  
W 278 · D 250 · H 155  
top opening diameter 225  
full capacity 2,200ml



### MNN-255-B

C/T4 803770  
W 313 · D 280 · H 174  
top opening diameter 255  
full capacity 3,200ml

## An IH stainless steel Yukihiro pan with beautiful hammer marks.

Various useful recipes are included as a guide. Because the lid is made of heat-resistant glass, you can see the inside while cooking and know when the dish is ready to eat.



Compatible with open flames and induction heating



### MIS-23

C/T6 803978  
φ 285 · H 144  
top opening diameter 225  
full capacity 1,900ml



### MIS-26

C/T6 803985  
φ 315 · H 156  
top opening diameter 255  
full capacity 2,600ml



## HARIO Oven Range Ware

### Easy to mix, a deep shaped mixing bowl

A deep design that makes the mixing process easier. The size capacity fits plenty, and with a smaller diameter, you can store compactly. Furthermore, the three sizes can be stored by fitting them inside each other.



The three sizes can be stored by fitting them inside each other.



A deep design that makes mixing process easier.



For microwave



For oven



#### **MXP-900**

C/T12 420335  
 φ 156 · H102  
 top opening diameter 156  
 full capacity 900ml



#### **MXP-1500**

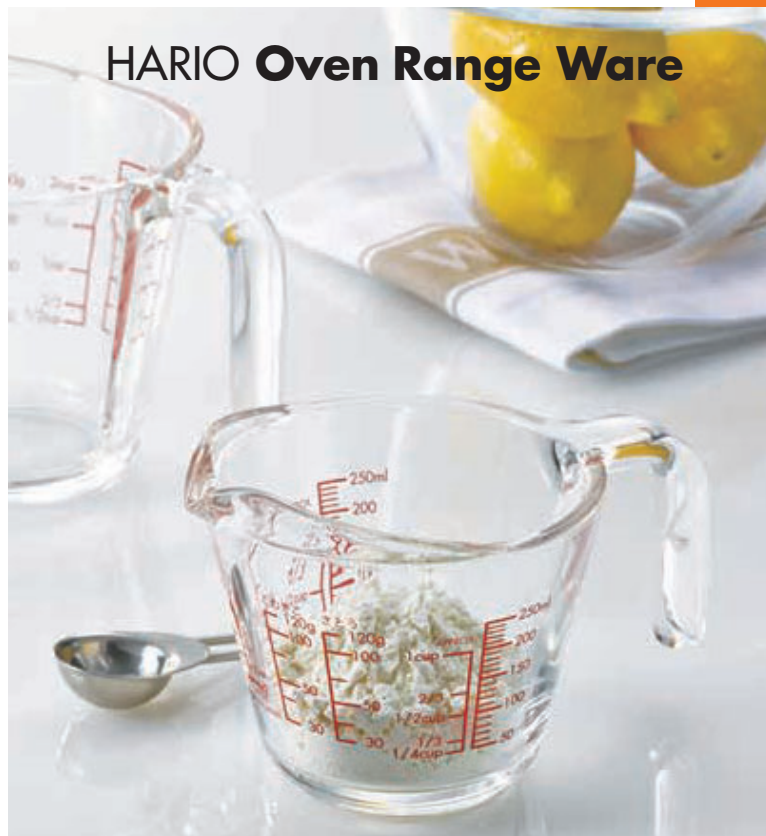
C/T12 420342  
 φ 187 · H115  
 top opening diameter 187  
 full capacity 1,500ml



#### **MXP-2200**

C/T12 420359  
 φ 210 · H120  
 top opening diameter 210  
 full capacity 2,200ml

## HARIO Oven Range Ware



## The feature is the measurements that can be seen from inside

Considering the line of sight when using a measuring cup, we placed markings that are clearly legible when viewed from the top. This has measurement markings not just for fluids, but for sugar and flour as well. Being heat resistant glass, these are safe when preparing hot water in a microwave.



For microwave

**CMJ-200**

C/T24 530300  
W86 · D81 · H87  
top opening diameter 81  
practical capacity 200ml

**CMJ-500**

C/T24 530317  
W99 · D91 · H145  
top opening diameter 91  
practical capacity 500ml

**CMJW-200**

C/T24 530331  
W118 · D81 · H87  
top opening diameter 81  
practical capacity 200ml

**CMJW-500**

C/T24 530324  
W150 · D105 · H120  
top opening diameter 105  
practical capacity 500ml



For microwave



For oven

**MJP-250**

C/T12 530379  
W155 · D109 · E98  
top opening diameter 109  
practical capacity 250ml

**MJP-500**

C/T12 530386  
W173 · D128 · H123  
top opening diameter 128  
practical capacity 500ml



Measurement markings that can be seen from the inside.



Open by lifting up on the lid.



Close by pushing down on the lid.



Difficult to spill even when tipped over.



For hot drink



**MPS-100-OG**

C/T36 813618  
 φ 63 · H 97  
 top opening diameter 37  
 practical capacity 100ml



**MPS-100-R**

813601



**MPS-150-OG**

C/T36 813649  
 φ 69 · H 109  
 top opening diameter 37  
 practical capacity 150ml



**MPS-150-R**

813632

**Push to pour, a sealed soy sauce cruet**

A sealed soy sauce cruet that stores soy sauce safely while maintaining flavor. Soy sauce is poured by simply pressing down on the upper surface of the lid, with the amount being controlled by how hard you push.

\*This can be used for vinegar as well. Push the center of lid to pour.



Press the center of the lid to pour soy sauce.



For hot drink



**OMPS-120-OG**

C/T36 813670  
 φ 68 · H 88  
 top opening diameter 44  
 practical capacity 120ml



**OMPS-120-R**

813663



**OMPS-180-OG**

C/T36 813694  
 φ 74 · H 108  
 top opening diameter 44  
 practical capacity 180ml



**OMPS-180-R**

813687

## Healthy cooking with oil spray

An oil spray that can be prepared meals without excess oil. It can spray small amounts of oil as a fine mist. It can create a healthy cooking oil with lower calories. Original recipe included.



Pump before using.



For hot drink



### OS-60-TOG

C/T24 419520  
 $\varnothing$  56 • H150  
 top opening diameter 37  
 practical capacity 60ml



### OS-60-TCGR

419537



## A BBQ oil spray packaged for outdoors



For hot drink



**new**

### BOS-60-TOG

C/T24 419582  
 $\varnothing$  56 • H150  
 top opening diameter 37  
 practical capacity 60ml







### Transparent, deep spice mill with a lid

Since ground spices can be stored in the lid, you can see the quantity to be used. While cooking, spices are protected from moisture such as steam from cookware. The body is made of heatproof glass resistant to spread of color or odor. The mill is used for rock salt, whole pepper, dried garlic, and other spices.



As spices can be stored in the lid, they can be protected from moisture.



You can directly sprinkle your favorite spices whether pepper or dried garlic.



Spices can be stored in the lid.



For hot drink



**new**

**SMS-120-B**

C/T48 708037

φ 55 • H153

top opening diameter 37  
practical capacity 120ml



## Clog-resistant burr perfect for sesame

The shape of the burr is designed to resist clogging even for sesame that produces oil. Enjoy the taste of freshly ground, fragrant sesame.



Ground sesame can be stored in the lid.



For hot drink



**new**

**SMS-120-PGR**

C/T48 708044

φ 55 • H153

top opening diameter 37  
practical capacity 120ml

## One shake is 1/2 teaspoon A measuring spice jar

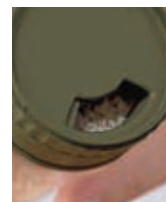
As one shake is equivalent to 1/2 teaspoon, it will prevent you from excess salt or sugar intake. The heatproof glass jar makes it easy to know what's inside, and can be useful for dry herbs, and for refills on granular seasonings, as well as salt and sugar. Colors and smells are difficult to transfer, and it is safe to wash using hot water, dishwasher, and dish dryer. You can always use it cleanly.



An opening that can pour directly.



A three-hole opening to pour salt.



A measured opening that pours 1/2 teaspoon.



The underside of the top cap can be used as well.

\* In order to measure 1/2 teaspoon, close the lid opening, and flip upside down 180°. Return it back to its original state and turn the lid opening to the 1/2-teaspoon opening



For hot drink



**NSS-M-OG**

C/T36 811775

φ 59 • H118

top opening diameter 55  
practical capacity (salt 100g)



**NSS-M-R**

811768

## A dressing bottle that allows one-hand operation

Due to its excellent seal, you can prepare dressing just by putting ingredients into the bottle and shaking it. Made of heatproof glass, the bottle can be washed in hot water or dishwasher/dryer.



One-hand operation to open and close the spout.



Due to its excellent seal, you can shake the bottle to stir dressing.



The spout allows for controlled portioning.



Its slim shape makes for easy storage.



For hot drink



### ODB-120-PGR

C/T24 532410  
 φ 55 · H 152  
 top opening diameter 37  
 practical capacity 120ml



### ODB-120-B

532403



### ODB-240-PGR

C/T24 532434  
 φ 55 · H 217  
 top opening diameter 37  
 practical capacity 240ml



### ODB-240-B

532427



For hot drink



### DBS-120G

C/T24 531222  
 φ 55 · H135  
 top opening diameter 37  
 practical capacity 120ml



### DBS-120B

531208



### DBS-240G

C/T24 531239  
 φ 55 · H203  
 top opening diameter 37  
 practical capacity 240ml



### DBS-240B

531215

## Use the cooking bottle for authentic cuisines at your home

A cooking bottle which comes with original recipes of Chef Akiko Nakayama, which can cook authentic cuisines at your home. By adding taste and richness, it gives a depth in flavor. Enjoy flavorful oils, ponzu vinegars, and sauces which become basic stocks and accented flavors for Japanese, Western and Chinese cuisines. Let's start cooking!



**Chef Akiko Nakayama**  
Menu recipe development and styling.  
General food coordinator. Sponsored by  
Akiko Nakayama Cooking Classes.



## Cooking Bottle



For hot drink



### CKB-150-OG

C/T24 532014  
φ 50 • H145  
top opening diameter 31  
practical capacity 150ml



### CKB-150-R

532007



For hot drink



### CKB-300-OG

C/T24 532045  
W70 • D68 • H206  
top opening diameter 57  
practical capacity 300ml



### CKB-300-R

532038



### CKB-3012-R

C/T12 532069  
practical capacity 150ml • 300ml





For hot drink



**MCN-200R**

C/T24 413672  
 φ 99 • H142  
 top opening diameter 96  
 coffee powder 200 g  
 full capacity 800ml



**MCN-200B**

413627



**MCN-300R**

C/T24 413689  
 φ 99 • H189  
 top opening diameter 96  
 coffee powder 300 g  
 full capacity 1,000ml



**MCN-300B**

413634



**new**

**MCNT-S-B**

C/T24 413849  
 W 120 • D 87 • H 110  
 top opening diameter 85  
 coffee powder 130 g  
 full capacity 480ml



**new**

**MCNT-M-B**

C/T24 413856  
 W 130 • D 87 • H 150  
 top opening diameter 85  
 coffee powder 190 g  
 full capacity 670ml



## The skinny canister, a slim canister that fits your hand

It's clear design keeps a sense of cleanliness. It can be used to store anything from dried fruits to pickled vegetables.



For hot drink



### SCN-200T

C/T24 413641  
 $\phi$  75 • H85  
 top opening diameter 70  
 practical capacity 200ml



### SCN-400T

C/T24 413658  
 $\phi$  75 • H143  
 top opening diameter 70  
 practical capacity 400ml



### SCN-700T

C/T24 413665  
 $\phi$  75 • H 228  
 top opening diameter 70  
 practical capacity 700ml

\* Long pastas may not fit in this item.



For hot drink



### SFS-S

C/T24 010871  
 $\phi$  67 • H 118  
 top opening diameter 20  
 practical capacity (salt 120g)



### SFS-M

C/T24 010888  
 $\phi$  80 • H 142  
 top opening diameter 27  
 practical capacity (salt 250g)



### SFS-L

C/T24 010895  
 $\phi$  91 • H 164  
 top opening diameter 30  
 practical capacity (salt 350g)



### BCN-100-W

C/T12 413726  
 $\phi$  102 • H 72  
 top opening diameter 102  
 full capacity 400ml  
 practical capacity : tea leaves • coffee grounds/ 100g(approx.)



### BCN-200-W

C/T12 413733  
 $\phi$  102 • H 143  
 top opening diameter 102  
 full capacity 800ml  
 practical capacity : tea leaves • coffee grounds/ 200g(approx.)



Can be stored inside one another.



Removable packing.



Microwave safe.

### Rectangular storage containers made entirely of heatproof glass

The lid and body of these storage containers is made from heatproof glass. Due to its rectangular shape, space can be effectively utilized when storing. They can also be stacked on top of each other. The top surface has a clear appearance, and it is possible to view the inside of the container from the side. This product is microwave safe. Furthermore, by removing the lid, it can be used in the oven as well. The size differences make it possible to store each container inside each other making compact storage possible.



For microwave



For oven

## HARIO Oven Range Ware



**CWK-S-OG**

C/T24 416826  
W104 • D104 • H56  
full capacity 250ml



**CWK-S-R**

416819



**CWK-M-OG**

C/T18 416857  
W134 • D134 • H75  
full capacity 600ml



**CWK-M-R**

416840



### Overnight glass salting bowls easily display your favorite vegetables

Due to its clear and simple design, the glass overnight salting bowl enables you to see the colorful vegetables, which makes it look nice even on the dinner table. Because it has a lid, you can refrigerate it directly after salting. The bowl is made out of heatproof glass, and it prevents colors and smells to stain, and can be washed with hot water, dishwasher, and dish dryer. This product comes with Chef Akiko Nakayama's recipes.



For microwave



**GTK-S-OW**

C/T12 098077  
W116 • D110 • H98  
top opening diameter 105  
full capacity 500ml



**GTK-S-R**

098060



Lay the weighted piece.



Use the lid for storage.



Microwave safe.



## A handy juicer that can easily make fresh juices

A personal handy juicer. By raising or lowering the spiral shaft, the blade will rotate, grinding the fruit pulp and stirring it. It can produce one cup of fresh juice very easily, and the cup can be used directly to drink out of. You can easily enjoy your favorite fresh juices.



For hot drink



### HDJ-L-OW

C/T24 401280  
 $\varnothing$ 88 • H 160  
 top opening diameter 83  
 practical capacity 300ml



### HDJ-L-R

401297



Comes with 10 recipes including a perfect for breakfast acai bowl and a warm pumpkin soup.



Rotating spiral shaft.



# HARIO Oven Range Ware

## Square Container



**CWK-S-OG**  
C/T24 416826  
W104 • D104 • H56  
full capacity 250ml



**CWK-S-R**  
416819



**CWK-M-OG**  
C/T18 416857  
W134 • D134 • H75  
full capacity 600ml



**CWK-M-R**  
416840

## Mixing Bowl



**MXP-900**  
C/T12 420335  
φ 156 • H102  
top opening diameter 156  
full capacity 900ml



**MXP-1500**  
C/T12 420342  
φ 187 • H115  
top opening diameter 187  
full capacity 1,500ml



**MXP-2200**  
C/T12 420359  
φ 210 • H120  
top opening diameter 210  
full capacity 2,200ml

## Measure Cup



**MJP-250**  
C/T12 530379  
W155 • D109 • H98  
top opening diameter 109  
practical capacity 250ml



**MJP-500**  
C/T12 530386  
W173 • D128 • H123  
top opening diameter 128  
practical capacity 500ml

## Shot Glass



**SGS-80**  
C/T6 × 8 240834  
φ 60 • H70  
top opening diameter 60  
full capacity 80ml



**SGS-140**  
C/T6 × 8 240841 φ 69 • H90  
top opening diameter 69  
full capacity 140ml

## Yunomi



**HU-1**  
C/T5 × 12 836440  
φ 86 • H63  
top opening diameter 86  
full capacity 170ml



**HU-0830**  
C/T30 836464  
HU-1 × 2



For microwave For oven



CAMPAIGN

## MKK-2012-OW

C/T12 092198  
W83 · D81 · H46  
full capacity 110ml



CAMPAIGN

## MKK-2012-R

092204



CAMPAIGN

## KST-2012-OW

C/T12 092167  
S:W111 · D107 · H47  
M: W143 · D139 · H62  
full capacity 250ml/600ml



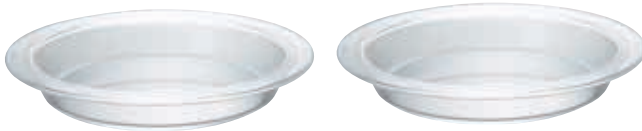
CAMPAIGN

## KST-2012-R

092174



For microwave For oven



CAMPAIGN

## HPZ-1812

C/T12 420045  
φ200 · H30  
top opening diameter 164  
full capacity 400ml



For microwave For oven



CAMPAIGN

## MXP-2606

C/T6 420571  
M: φ187 · H115 top opening diameter 187  
L : φ210 · H120 top opening diameter 210  
full capacity 1,500ml/2,200ml



For microwave For oven



CAMPAIGN

## HSB-2812

C/T12 420052  
φ120 · H55  
top opening diameter 120  
full capacity 300ml



For microwave For oven



CAMPAIGN

## HU-3012

C/T12 836631  
φ86 · H63  
top opening diameter 86  
full capacity 170ml

# Olive Wood Series for Coffee

## Dripper



For hot drink



### VDG-01-0V

C/T24 724532  
 φ 120 • H 77  
 top opening diameter 97  
 1-2cups



### VDG-02-0V

C/T24 724549  
 φ 120 • H 95  
 top opening diameter 115  
 1-4cups

## Server



For hot drink



### VCWN-40-0V

C/T24 019324  
 W177 • D118 • H104  
 top opening diameter 88  
 practical capacity 400ml



### VCWN-60-0V

C/T24 019331  
 W182 • D128 • H121  
 top opening diameter 88  
 practical capacity 600ml

## Coffee Mill



### MCW-2-0V

C/T12 707375  
 W 167 • D 85 • H 215  
 coffee grounds 30g

A washable grinder

## Nel Drip



For hot drink



### DPW-1-0V

C/T12 131811  
 φ 95 • H168  
 top opening diameter 93  
 practical capacity 240ml  
 1-2cups



### DPW-3-0V

C/T12 131828  
 φ 110 • H195  
 top opening diameter 101  
 practical capacity 480ml  
 3-4cups

## Press Coffee



For hot drink



### CPSW-2-0V

C/T12 153714  
 W114 • D80 • H170  
 top opening diameter 73  
 practical capacity 300ml  
 2cups



### CPSW-4-0V

C/T12 153721  
 W133 • D95 • H186  
 top opening diameter 90  
 practical capacity 600ml  
 4cups



### DGC-40-0V

C/T12 221901  
 φ 128 • H224  
 top opening diameter 99  
 practical capacity 400ml  
 3cups

## Coffee Stand



**VSS-1-OV**  
C/T6 021204  
W145 • D160 • H230



**VSS-1206-OV**  
C/T6 021259  
W156 • D160 • H248  
includes 100 sheets of VCF-02M



## Olive Wood Series for Tea

### Press Style



For hot drink



**THW-2-OV**  
C/T24 153974  
W116 • D76 • H160  
top opening diameter 73  
practical capacity 300ml  
2 cups



**THW-4-OV**  
C/T24 153981  
W144 • D94 • H174  
top opening diameter 90  
practical capacity 600ml  
4 cups

### Pull Up Style



For hot drink



**TEO-45-OV**  
C/T24 154117  
W150 • D116 • H138  
top opening diameter 82  
practical capacity 450ml



**TEO-70-OV**  
C/T24 154124  
W160 • D125 • H156  
top opening diameter 82  
practical capacity 700ml

## Olive Wood Series for Cook



For hot drink



**SFS-S**  
C/T24 010871  
φ 67 • H 118  
top opening diameter 20  
practical capacity (salt 120g)



**SFS-M**  
C/T24 010888  
φ 80 • H 142  
top opening diameter 27  
practical capacity (salt 250g)



**SFS-L**  
C/T24 010895  
φ 91 • H 164  
top opening diameter 30  
practical capacity (salt 350g)