

Coffee



V60 Coffee Dripper

Widely recognized around the world, the V60 pour over

Why the cone shape?

The cone shaped paper filter adds depth to the coffee layer, so that the water flows to the center, expanding the amount of time the water is in contact with the ground coffee.



VD-01W

C/T48 724204
W115 • D100 • H82
top opening diameter 95
1-2cups



VD-01R

724228



VD-02W

C/T48 724303
W137 • D116 • H102
top opening diameter 116
1-4cups



VD-02R

724327



VD-01T

C/T48 723016
W115 • D100 • H82
top opening diameter 95
1-2cups



VD-02T

C/T48 723023
W137 • D116 • H102
top opening diameter 116
1-4cups



VD-03T

C/T36 723030
W157 • D137 • H122
top opening diameter 137
1-6cups



For hot drink



VDG-01W

C/T24 724402
W124 · D110 · H78
top opening diameter 97
1-2cups



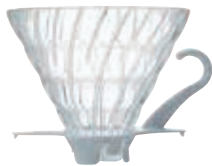
VDG-01R

724464



VDG-01B

724419



VDG-02W

C/T24 724426
W128 · D115 · H95
top opening diameter 115
1-4cups



VDG-02R

724471



VDG-02B

724433



VDG-03B

C/T24 724525
W165 · D138 · H115
top opening diameter 136
1-6cups

V60 Glass Dripper

Olive Wood Series



For hot drink



VDG-01-OV

C/T24 724532
φ120 · H77
top opening diameter 97
1-2cups



VDG-02-OV

C/T24 724549
φ120 · H95
top opening diameter 115
1-4cups

V60 Ceramic Dripper



VDC-01W
 C/T40 723115
 W119 • D100 • H82
 top opening diameter 95
 1-2cups



VDC-01R
 724013



VDC-02W
 C/T36 723122
 W140 • D120 • H102
 top opening diameter 116
 1-4cups



VDC-02R
 724037

V60 Metal Dripper



VDM-02HSV

C/T12 724129
W145 • D120 • H90
top opening diameter 120
1- 4cups



VDM-02-MB

726697



VDM-02CP

724143



VDP-02CP / VDPC-02CP

C/T12 724150 / 726888
W135 • D120 • H92
top opening diameter 120
1-4cups



40 sheets

VCF-01-40W

C/T1 0×30 723214
1-2cups



40 sheets

VCF-02-40W

C/T1 0×24 723221
1-4cups



40 sheets

VCF-03-40W

C/T1 0×18 723238
1-6cups



40 sheets

VCF-01-40M

C/T1 0×30 723245
1-2cups



40 sheets

VCF-02-40M

C/T1 0×24 723252
1-4cups



40 sheets

VCF-03-40M

C/T1 0×18 723269
1-6cups



100 sheets

VCF-01-100MK

C/T 5×20 723801
1-2cups



100 sheets

VCF-02-100MK

C/T 5×16 723818
1-4cups



100 sheets

VCF-01-100W

C/T150 723313
1-2cups



100 sheets

VCF-02-100W

C/T120 723320
1-4cups



100 sheets

VCF-03-100W

C/T100 723337
1-6cups



100 sheets

VCF-01-100M

C/T150 723344
1-2cups



100 sheets

VCF-02-100M

C/T120 723351
1-4cups



100 sheets

VCF-03-100M

C/T100 723368
1-6cups

V60 Coffee Server



For microwave



Do not expose to open flames



VCS-01B

C/T24 019119
W162 · D114 · H110
top opening diameter 92
practical capacity (below band) 450ml
1-3cups
microwave safe including lid



VCS-02B

C/T24 019126
W180 · D125 · H133
top opening diameter 92
practical capacity (below band) 700ml
1-5cups
microwave safe including lid



VCS-03B

C/T24 019133
W185 · D137 · H157
top opening diameter 92
practical capacity (below band) 1,000ml
2-8cups
microwave safe including lid



XVD-36B

C/T24 019805
W130 · D107 · H106
top opening diameter 85
practical capacity 360ml
1-3cups
microwave safe including lid



XVD-60B

C/T24 019812
W137 · D121 · H128
top opening diameter 85
practical capacity 600ml
2-5cups
microwave safe including lid



XVD-80B

C/T24 019829
W143 · D132 · H145
top opening diameter 85
practical capacity 800ml
2-6cups
microwave safe including lid



XGS-36TB

C/T24 020108
W130 · D107 · H99
top opening diameter 77
practical capacity 360ml
1-3cups
microwave safe including lid



XGS-60TB

C/T24 020115
W145 · D121 · H120
top opening diameter 77
practical capacity 600ml
2-5cups
microwave safe including lid



XGS-80TB

C/T24 020122
W150 · D129 · H138
top opening diameter 77
practical capacity 800ml
2-6cups
microwave safe including lid

Coffee Server

A heatproof coffee decanter popular also in overseas cafés

Its simple shape is popular also in overseas cafés. It comes in two practical capacities: 400 ml and 600 ml. It is a compact, easy-to-use, heatproof glass coffee decanter.



For microwave



Do not expose to open flames



HDC-2T

C/T24 514164
W111 · D90 · H138
top opening diameter 72
practical capacity 400ml



new HDC-600T

C/T24 514157
W125 · D104 · H165
top opening diameter 86
practical capacity 600ml

Olive Wood Series



For hot drink



Do not expose to open flames



VCWN-40-OV

C/T24 019324
W 177 · D 118 · H 104
top opening diameter 88
practical capacity 400ml



VCWN-60-OV

C/T24 019331
W 182 · D 128 · H 121
top opening diameter 88
practical capacity 600ml



A Coffee pot designed with safety in mind, and compatible with commercial machines

A spout made of resin which is easy to pour and has good water flow. The lid is a single-push type that enables easy opening and closing. The handle is a safe two-banded design. Made with heatproof glass, this coffee pot is dishwasher safe.



Includes detachable cap.



Large opening that is easy to wash.



For hot drink



Do not expose to open flames



CDH-18CBR

C/T12 171527
W210 · D165 · H173
top opening diameter 90
practical capacity (below band) 1,800ml



Authentic coffee made with style

The dripper is based on the V60 cone shape. You can enjoy the ease of the paper filter pour over, brewing directly into a carafe. The silicone band can be removed and washed. The dripper is designed to stand by itself.



VDD-02B

C/T12 142558
 W 135 · D 125 · H 198
 top opening diameter 115
 practical capacity (below band) 700ml
 1-4cups



XVDD-3012W

C/T12 020290
 W140 · D121 · H210
 Dripper : 1-4cups
 Pot : practical capacity 600ml
 includes 40 sheets of VCF-02M



VDS-3012R

C/T12 142268
 W130 · D107 · H174
 Dripper : 1-2cups
 Pot : practical capacity 360ml
 includes 40 sheets of VCF-01M



V60 Glass Iced Coffee Maker

Iced coffee maker, in which coffee is cooled with ice while it drips. The long strainer containing ice cools the dripping coffee. This coffee maker is made with transparent materials only. Enjoy iced coffee with a clear taste in a cool manner!



For hot drink



VPD-02HSV

C/T12 142053
W 160 • D 125 • H 200
top opening diameter 115
Pot : practical capacity 700ml
includes 40 sheets of VCF-02M



For hot drink



A ring holder made of transparent silicon rubber is attached to the upper section of the dripper.

VIG-02T

C/T12 142671
W 165 • D 120 • H 235
top opening diameter 116
Pot : practical capacity 700ml
includes 40 sheets of VCF-02M

TETSU-KASUYA

The "Kasuya Model Series" produced by Tetsu Kasuya.

The series consists of an easily handled mini drip kettle, thoughtfully designed cupping tools, and a dripper suitable for the "4:6 method," a brewing method based on the concept of "easily-brewed delicious coffee for everyone."



粕谷 哲 Tetsu Kasuya

First Asian world champion of 2016 WORLD BREWERS CUP
Champion of 2015 JAPAN BREWERS CUP

Three years after Tetsu Kasuya stepped into the coffee industry, he became the first Asian world champion in the 2016 World Brewers Cup for his unique "4:6 method." He is currently active in many countries including Japan, engaged in coaching consulting for companies, product promotion, and product development. He also serves as a judge for competitions, devoting his efforts to nurturing future baristas.



KDC-02-B

C/T36 010628
W140 • D120 • H102
top opening diameter 116
1-4cups



With the concept of "easily-brewed delicious coffee for everyone," a dripper with spiral ribs was developed under the supervision of Kasuya.



The dripper is suitable for brewing strong coffee.



The use of black for the cupping bowl and spoon eliminates any visual bias.



With the mini drip kettle, one cup is dripped with ease.



KDK-300-MB

C/T24 010611
 W165 · D90 · H100
 top opening diameter 70
 practical capacity 300ml



KCB-260-B

C/T36 010635
 φ93 · H65
 top opening diameter 93
 full capacity 260ml



KCS-1-MB

C/T48 010642
 W166 · D44 · H26



Easy to pour, coffee drip kettle with a slim spout

This drip kettle with a slim spout makes it easier to control the amount and speed of hot water being poured, making it useful when brewing a V60. 500 ml compact size has been added to the Buono series.

V60 Coffee Kettle Buono



For open flames



Compatible with open flames and induction heating



Compatible with open flames and induction heating.

※ VKB-100 • VKB-120



new

VKB-70HSV

C/T12 021426
W255 • D115 • H140
top opening diameter 71
practical capacity 500ml



VKB-100HSV

C/T12 021136
W295 • D144 • H130
top opening diameter 77
practical capacity 600ml



Compatible with open flames and induction heating



For open flames



VKB-120HSV

C/T12 021006
W274 • D144 • H147
top opening diameter 77
practical capacity 800ml



VKB-120-MB

C/T12 021563
W292 • D144 • H147
top opening diameter 77
practical capacity 800ml



VKBN-90CP

C/T6 021099
W290 • D126 • H145
top opening diameter 71
practical capacity 700ml

Ideas for an easy-to-pour kettle are realized in the spout shape and the wooden handle that fits comfortably in one's hand

Ideas for an easy-to-pour kettle are realized in the spout shape and the wooden handle that fits comfortably in one's hand.



The shape of the handle is designed for easy dripping. You can place your thumb on the top of it.



You can also wrap your thumb around the top of the handle for a firmer grip.



The pursuit of easy pouring resulted in this shape.



Compatible with open flames and induction heating.

V60 Coffee Kettle Fit



Compatible with open flames and induction heating



VKF-120-HSV

C/T12 021570
W263 · D145 · H150
top opening diameter 77
practical capacity 800ml



VKF-120-MB

021587



Compatible with open flames and induction heating



V60 Coffee Kettle Wood

new

VKW-120-HSV

C/T12 021716
W310 · D144 · H160
top opening diameter 77
practical capacity 800ml



Compatible with open flames and induction heating.



A kettle with temperature control for easy operation

This drip kettle with a slim spout Feel your taste change by only 1°C difference. This is the electric kettle for hand dripping with the temperature control from 60°C to 96°C.

Heating and heat-retention status is displayed in different colors for easy recognition. (EVT)



Both the EVKB and EVT models store the cord at the bottom.



The temperature of water can be set between 50 and 96 degrees C in 1 degree C increments. The screen is orange while water is being heated. (EVT)



When the water reaches the set temperature and the heat-retention mode starts, the screen turns green. (EVT)



Temperature is displayed until heat retention is done and the kettle turns off automatically. (EVT)



EVKB-80HSV

C/T6
W300 · D156 · H175
top opening diameter 77
capacity : minimum 150ml maximum 800ml



new

EVT-80-HSV

C/T6
W300 · D190 · H185
top opening diameter 77
capacity : minimum 300ml maximum 800ml

V60 Drip Thermometer

A thermometer for pour over

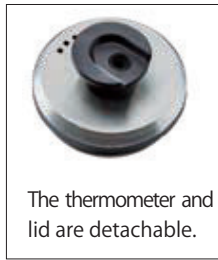


VTM-1B (Display in Celsius)
VTM-1B-U (Display in Fahrenheit)

C/T24
 021181 (1B) / 021198 (1B-U)
 [Thermometer]
 W45 • D107 • H140
 [Thermometer+ Lid]
 W83 • D107 • H140



Real time digital display



The thermometer and lid are detachable.



Measure the temperature at the root of the nozzle.



V60 Drip Scale

Requirements for brewing delicious coffee

In order to brew delicious coffee, quantity and extraction time are essential. The V60 drip scale is used to simultaneously measure both of these factors.

*The V60 metal drip scale is equipped with a rechargeable battery and has a backlight design.



Both extraction quantity and extraction time can be measured simultaneously.



Timer Scale

Due to its thinness, compact storage is possible.



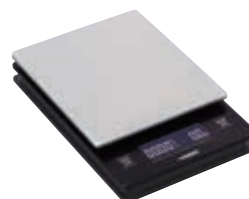
The stainless weighing platform can be removed by turning.



Dirt is easily wiped off, and care for the device is simple.



VST-2000B
 C/T20 021211
 W 120 • D 190 • H 29 unit
 of display : 2-2000 g
 maximum count up time :
 99 minutes 59 seconds
 iF DESIGN AWARDS 2013



VSTM-2000HSV
 C/T20 021310
 W 120 • D 175 • H 31
 unit of display : 2-2000 g
 maximum count up time :
 99 minutes 59 seconds



An enameled drip kettle

The thin spout drip kettle enables you to easily control the amount and speed of water, useful for brewing delicious coffee. Enjoy the natural atmosphere produced by the combination of enamel and natural wood.



Compatible with open flames and induction heating



BDK-80-W

C/T6 021501
W 280 • D 136 • H 170
top opening diameter 77
practical capacity 800ml



Induction heater (IH) and direct flame are available.



The thin spout is suitable for dripping.



BCN-100-W

C/T12 413726
φ 102 • H 72
top opening diameter 102
full capacity 400ml
practical capacity : tea leaves • coffee grounds/ 100g(approx.)



BCN-200-W

C/T12 413733
φ 102 • H 143
top opening diameter 102
full capacity 800ml
practical capacity : tea leaves • coffee grounds/ 200g(approx.)

A drip tray is now offered for resting a dripper after brewing coffee



This porcelain drip tray is for V60 drippers in 01 and 02 size.
After brewing coffee, move the dripper here straight from the server.



DT-1W

C/T36 723962
φ115 • H42
top opening diameter 115
practical capacity 120ml



The tray is also convenient for used tea bags.

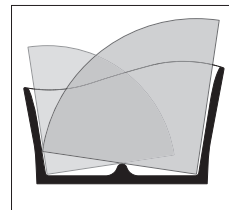
We aimed for an easy to use paper filter holder

The slope at the bottom makes it easy to take out the paper filter. Small contact surface between the paper filter and the stand keeps it sanitary. 100 sheets of paper filters can be stored in this holder.



VPS-100W

C/T24 723924
W165 • D68 • H100



Very little surface contact keeps it clean.



The body is sloped on the bottom, making it easy to take out individual filters.

Ceramic cup and saucer in tune with the shape of the V60 dripper



CCS-1W

C/T24 040663
Cup : W117 • D 95 • H 65
top opening diameter 95
Saucer : φ 140
Cup : full capacity 200ml



CCS-5012W

C/T12 040670
CCS-1W × 2

Coffee Mill

Important preparations before brewing coffee

All manual coffee grinders use mills made of ceramic. Ceramic mills keep the temperature down when grinding and can be easily rinsed with no potential rusting. Coffee mill size, material and variations are all important items for deliciously brewed coffee.



MSS-1DTB
C/T24 707726
W150 · D72 · H220
top opening diameter 70
coffee grounds 24g
2cups
washable grinder



MCD-2
C/T12 707337
W143 · D88 · H208
coffee grounds 35g



CM-502C
C/T12 707467
W152 · D104 · H231
coffee grounds 40g



MSCS-2DTB
C/T12 707733
W172 · D93 · H231
top opening diameter 90
coffee grounds 100g
washable grinder
burr-stabilizer plate



MMCS-2B
C/T12 707740
W167 · D95 · H195
top opening diameter 88
coffee grounds 100g
washable grinder
die-cast aluminum handle



Control knob display shows " coarse" and " fine . "



new
MOC-3-TB
C/T24 708020
W157 · D70 · H213
top opening diameter 63
coffee grounds 36g
3cups
washable burr

A compact coffee mill convenient for carrying



The handle is inserted into the band when not in use.

An aluminum alloy coffee mill with a weight that feels good in your hands.



MSG-2-T
C/T24 707894
W150 · D53 · H190
top opening diameter 46
coffee grounds 24g
2cups
washable grinder



MSG-2-TB
707887



MCS-1
C/T12 707344
W148 · D98 · H210
top opening diameter 81
coffee grounds 10g



MM-2
C/T24 707504
W160 · D100 · H185
top opening diameter 79
coffee grounds 24g



CMHN-4
C/T20 707320
W208 · D105 · H215
top opening diameter 79
coffee grounds 120g
The glass is not heatproof glass.



MXR-2TB
C/T12 707627
W183 · D75 · H175
coffee grounds 40g
washable burr



MSA-2-SV
C/T12 707863
W145 · D52 · H200
top opening diameter 44
coffee grounds 24g
washable burr



MSA-2-B
707870



The hopper and the grounds receiver are removable vertically.

Ceramic and olive wood coffee mill

This coffee mill features a combination ceramic hopper and olive wood container, highlighting a balance between nature and design.



MCW-2-OV

C/T12 707375
W 167 • D 85 • H 215
coffee grounds 30g
washable burr



Choose the fineness of coffee grounds you like by turning the control knobs.



The slim middle makes it easy to grip while grinding the coffee.



Stainless steel conical burr



Allows users to adjust grind settings

The particle size of coffee grounds determines the flavor of a cup of coffee.

Particle size can be adjusted settings according to your taste, from medium fine to coarse grind, the best for hand dripping.

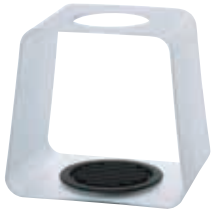
EVCG:44 grind settings



V60 Electric Coffee Grinder
EVCG-8B

C/T2
W 133 • D 220 • H 390
coffee grounds 240g

A coffee drip stand for pour over



DSC-1T

C/T12 021297
W 170 • D 134 • H 160



DSC-1TB

021303



VSS-1T

C/T12 021228
W 132 • D 140 • H 180

iF DESIGN AWARDS 2013

The V60 drip scale can be set together and used.



VAS-1

C/T12 021235
W 195 • D 140 • H 215



VAS-8006-G

C/T6 021327
W 190 • D 155 • H 250
includes 40 sheets of VCF-02M



VAS-8006-HSV

C/T6 021242
W 190 • D 155 • H 250
includes 40 sheets of VCF-02M

Olive Wood Series



VSS-1-OV

C/T6 021204
W 145 • D 160 • H 230



VSS-1206-OV

C/T6 021259
W 156 • D 160 • H 248
includes 100 sheets of VCF-02M



Coffee Stand

This drip stand allows you to adjust its height according to the server size.



VPOS-1506-SV

C/T6 142701
W 150 • D 150 • H 262
includes 100 sheets of VCF-02W



Suitable for 01 – 03 size of coffee server and dripper.



The V60 drip scale can be set together and used.

Press Coffee

Because coffee presses extract coffee oils, a main flavor ingredient in coffee, you can enjoy the individuality of the coffee beans. Black has joined the line.



CPSS-2-TB

C/T24 153608
W113 · D78 · H172
top opening diameter 74
practical capacity 240ml
1-2cups



CPSS-2-R

153615



THJ-2-SV

C/T12 105713
W110 · D87 · H166
top opening diameter 73
practical capacity 300ml
2cups



THJ-4-SV

C/T12 105720
W139 · D113 · H183
top opening diameter 90
practical capacity 600ml
4cups



new

THN-2-B

C/T12 105782
W114 · D76 · H167
top opening diameter 73
practical capacity 300ml
2cups



new

THN-4-B

C/T12 105799
W134 · D94 · H183
top opening diameter 90
practical capacity 600ml
4cups



THW-2-OV

C/T24 153974
W116 · D76 · H160
top opening diameter 73
practical capacity 300ml
2cups



THW-4-OV

C/T24 153981
W144 · D94 · H174
top opening diameter 90
practical capacity 600ml
4cups



For hot drink



THT-2MSV

C/T12 105645
W 115 · D 76 · H 166
top opening diameter 73
practical capacity 300ml
2cups



THT-4MSV

C/T12 105652
W 135 · D 92 · H 183
top opening diameter 90
practical capacity 600ml
4cups



THA-2SV

C/T12 102514
W135 · D80 · H185
top opening diameter 73
practical capacity 300ml
2cups



THA-4SV

C/T12 104518
W155 · D 95 · H 205
top opening diameter 90
practical capacity 600ml
4cups



CPSW-2-OV

C/T12 153714
W 114 · D 80 · H 170
top opening diameter 73
practical capacity 300ml
2cups



CPSW-4-OV

C/T12 153721
W133 · D95 · H186
top opening diameter 90
practical capacity 600ml
4cups



DGC-40-OV

C/T12 221901
φ 128 · H 224
top opening diameter 99
practical capacity 400ml
3cups



THE-2SVG

C/T6 105096
W120 · D78 · H192
top opening diameter 73
practical capacity 300ml
2cups

* Since the wooden parts of the DGC series are made by hand, the actual shape, color, size, and capacity may be slightly different from those in the photos.



With this device alone, a single cup of delicious coffee can be prepared

With only coffee grounds and hot water, you can brew one cup of delicious coffee. The carefully-designed mesh filter that ensures great taste comes in black, making stains hardly noticeable even if used repeatedly.



new
OCM-1-B
 C/T24 140936
 W118 • D93 • H93
 top opening diameter 80
 practical capacity 170ml

Authentic aroma without paper filters

Introducing a specialized stainless mesh that can extracts coffee oil which is one of the components of coffee's great flavor. This enables you to enjoy the true aroma unique to coffee.



Dripper structure



Compact storage



Graduated measuring scale inside.



CFOD-1B
 C/T24 171404
 W 115•D 110•H 82
 (includes the attachment)
 1 cup



CFO-1B
 C/T24 171077
 W118 • D96 • H148
 top opening diameter 82
 practical capacity 200ml
 1 cup



CFOD-02-B
 C/T24 171473
 W121 • D135 • H105
 1-4cups



CFOD-02-R
 171626



CFO-2B
 C/T24 171008
 W150 • D105 • H171
 top opening diameter 96
 practical capacity 300ml
 2cups



Put in the coffee grounds.



Start pour over.



Close the lid and directly pour.



A dripper made entirely of stainless steel with a double mesh filter

In the dripper, two finely etched mesh filters overlap. Appreciate the translucent liquid as if prepared with a paper filter, along with a rich flavor and a touch of the coffee's natural oils unique only to this metal filter.



Scale marks are shown for coffee grounds as a guide.



The precision double mesh filter does not allow the finer coffee powder to pass through.



Coffee oil is extracted.



new
DMD-01-HSV
 C/T48 727960 W132 ·
 D109 · H81
 top opening diameter 94
 1-2cups



new
DMD-02-HSV
 C/T48 727977
 W148 · D123 · H96
 top opening diameter 108
 1-4cups



Immersion dripper

This dripper extracts coffee after immersing ground coffee in hot water. It starts dripping after the switch is pressed, allowing anyone to extract coffee evenly.



Put ground coffee into the paper and pour in hot water.



After immersing coffee for a while, press the switch for a while, start dripping.



Coffee is dripped to the end even if you release your finger.



Hideki Togi, gagaku musician

As a musical performer from the Togi family, a family of musicians who for generations since the Nara era (710-794) has performed gagaku, ancient Japanese court music, he is active in multiple areas, engaged in music for movies, stage, and commercials, as well as being an actor.

Hideki Togi, musician and instrumental player of gagaku, which has 1,400 years of history as part of Japan's traditional culture, will talk about HARIO in 2019.



For hot drink



new
SSD-200-B

C/T12 728165
W118 · D115 · H133
top opening diameter 115
finished capacity 200ml
includes 40 sheets of VCF-02W



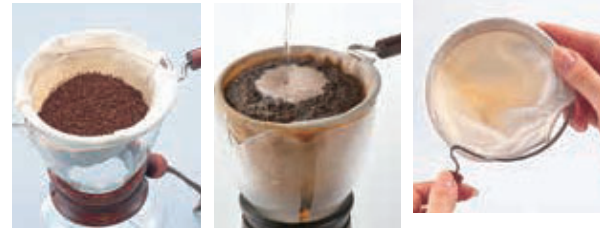
new
SSD-5012-B

C/T12 728172
W130 · D115 · H215
Dripper:finished capacity 200ml
Server:practical capacity 300ml
includes 40 sheets of VCF-02W



Cloth Drip

Due to the slow extraction of coffee through the fine and delicate cotton flannel, it never compromises on the acidity, bitterness, and flavor from the bean's original characteristics. Furthermore, you will be able to feel the coffee's rich taste from the coffee oils, which is an advantage to this method.



Medium grind coffee grounds

Let the coffee grounds expand.

Cloth filter : Cotton flannel

● After using the filter cloth, please rinse thoroughly. Place the filter in a container with clean water and store it inside the refrigerator.

※ This is to prevent oxidation of the oil of the remaining coffee grounds on the cloth filter.
 ※ The cloth filter can be replaced.



For hot drink



DPW-1

C/T12 331723
 φ 95 · H 168
 top opening diameter 93
 practical capacity 240ml
 1-2cups



DPW-3

C/T12 331730
 φ 110 · H 195
 top opening diameter 101
 practical capacity 480ml
 3-4cups

Olive Wood Series



For hot drink



DPW-1-OV

C/T12 131811
 φ 95 · H 168
 top opening diameter 93
 practical capacity 240ml
 1-2cups



DPW-3-OV

C/T12 131828
 φ 110 · H 195
 top opening diameter 101
 practical capacity 480ml
 3-4cups

A coffee syphon with outstanding presentation

While enjoying a rich aroma, you can also visually enjoy the coffee moving up and down through the glass bowl. If the extraction times are the same, there is little difference in flavor, making this apparatus a favorite amongst professionals.



MCA-3

C/T10 525016
W165 · D115 · H290
top opening diameter 72 (upper)
practical capacity 360ml
3cups



TCA-2

C/T12 503014
W160 · D95 · H340
top opening diameter 87 (upper)
practical capacity 240ml
2cups



TCA-3

C/T12 503113
W160 · D95 · H350
top opening diameter 87 (upper)
practical capacity 360ml
3cups



TCA-5

C/T12 503212
W160 · D110 · H360
top opening diameter 101 (upper)
practical capacity 600ml
5cups



DA-1SV

C/T12 511002
W138 · D88 · H188
top opening diameter 67 (upper)
practical capacity 120ml
1cup



A coffee siphon with an innovative concept

The Coffee Syphon Next and the Coffee Syphon Hario Sommelier both come with the stainless metal and cloth filter assemblies. The Coffee Syphon Hario Sommelier is different from past syphons, as it is designed in the image of a wine decanter, so that you can enjoy the aroma of the coffee.



※The handle is made of rubber and gives you a firm grip.

NXA-5

C/T12 502918
W115 • D180 • H390
top opening diameter 109 (upper)
practical capacity 600ml
5cups

* Comes with a metal filter and a cloth filter.



SCA-5

C/T4 502901
W150 • D186 • H355
top opening diameter 130 (upper)
practical capacity 600ml
5cups

* Comes with a metal filter and a cloth filter.



RCR-50

C/T6 536302
W264 • D139 • H190
top opening diameter 100
raw beans 50 g

Filter-in Coffee Bottle

Cold Brewed Coffee



Wine bottle shaped cold brew coffee bottle

Just by adding coffee grounds and water, you can make iced coffee. Put coffee grounds in the strainer, and place the lid. Set the spout and pour small amounts of water inside. Once the water is poured, put the stopper and gently shake the bottle to start the extraction. Refrigerate for approximately 8 hours for the cold-brew to complete.



For hot drink



FIC-70-MC

C/T24 033436
W87 • D84 • H300
top opening diameter 71
finished capacity 650ml
5 cups only



FIC-70-CBR

033443



The strainer can be removed. The upper parts are designed to put a lid on the bottom strainer.



Align the strainer with the spout.



Pour directly.



Cold Brew Coffee

Cold brew coffee jug and pitcher

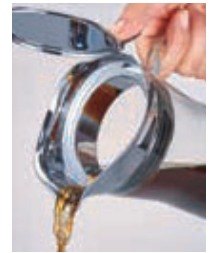
Just by adding coffee grounds and water, you can make iced coffee. Place coffee grounds in the strainer, and set the lid and spout. Slowly pour water into the carafe until full and refrigerate for approximately 8 hours for the cold brew to complete.



Pour coffee while the strainer is attached.
(CBS-10)



Attach the strainer to the spout.
(CBC-10)



Pour the coffee after removing the strainer.
(CBC-10)



For hot drink



CBS-10HSV

C/T24 036871
W 100 • D 94 • H 290
top opening diameter 88
finished capacity 1,000ml
8 cups only



For hot drink



CBC-10SV

C/T12 165021
W 152 • D 103 • H 310
top opening diameter 88
finished capacity 1,000ml
8 cups only

This drip-style cold brewed coffee device does not require speed adjustment

When water is put into the upper bowl, it flows and drips from the two slits of the dripper. The water drips completely in 1 hours without speed adjustment, enabling the casual enjoyment of authentic cold brewed coffee.



The dripping structure does not require adjustment.

A beaker-shaped pot.



SBS-5B

C/T12 163263
 φ 116 · H 360
 top opening diameter 73
 practical capacity 600ml
 5cups

Every drop creates the finest coffee

The slow dripping thoroughly extracts the flavor of the coffee, with a design that easily compliments a modern interior. The coffee's strength can be changed by adjusting the faucet.



Moisten the coffee grounds before extracting.

Use the faucet to adjust dripping rate.



WDC-6

C/T6 163201
 W150 · D129 · H455
 top opening diameter 77
 finished capacity 780ml
 2-6cups



WDW-6

C/T6 163225
 W205 · D135 · H475
 top opening diameter 77
 finished capacity 780ml
 2-6cups



PTN-5BZ

C/T6 163379
 W190 · D170 · H290
 top opening diameter 82
 practical capacity 600ml
 5cups



Place coffee grounds.

The faucet makes it easy to use.



" FURIKO, " an entirely new cold brewed coffee device

"FURIKO, an entirely new cold brewed coffee device overturning the conventional idea of a water dripper, features short-time extraction. The track of the pendulum optimized for the V60 dripper shape makes it possible to complete extraction in 30 minutes.



For hot drink



WDF-6

C/T1 163386
 W 205 · D 205 · H 985
 top opening diameter 77
 finished capacity 780ml
 2-6cups



Special coffee starts with the first drip

The water drips for 5 hours, extracting 2000ml of coffee into two flasks. The dripping rate during extraction can be adjusted using the faucet located on both sides.



For hot drink



WDW-20

C/T1 163232
 W290 · D230 · H980
 top opening diameter 105 (upper bowl)
 finished capacity 2,000ml
 20cups

Stainless steel mug with dual layer thermal vacuum insulation

Adopting a lid with a drink spout, you can enjoy your freshly dripped coffee without losing its heat.



VUW-35HSV

C/T24 222212
 φ 74 · H 156
 top opening diameter 70
 practical capacity 350ml

VUW-35B

222229



Sectional view : dual layer vacuum thermal insulating structure.

By taking off the lid, you can directly hand drip coffee into it.

Lid with a drink spout

The liquid does not spill out even if it is tilted, allowing you to carry it with you

V60 Soto Mug with vacuum insulating double wall enables you to carry freshly-brewed hot coffee, since you can remove its lid and place a dripper there. You can also carry iced coffee keeping it cold.



Lid with a drink spout



VSW-35HSV

C/T24 222311
 W 79 · D 69 · H 177
 top opening diameter 55
 practical capacity 350ml

VSW-35B

222328



This double wall, stainless steel coffee server maintains the temperature of the coffee

A vacuum insulating double wall, stainless steel coffee server is introduced to allow for greater enjoyment of delicious coffee for longer. It is designed to fit the V60 dripper for the tastiest coffee.



VHS-60W
C/T12 220560
W 161 · D 127 · H 142 top
opening diameter 80
capacity to set lid 550ml
2-4cups



VHS-60R
220577



VHS-60B
220584



For hot drink



VHS-80B
C/T12 220591
W 164 · D 132 · H 162
top opening diameter 80
capacity to set lid 750ml
2-6cups

SGS-80
C/T 6 × 8 240834
φ 60 · H 70
top opening diameter 60
full capacity 80ml

SGS-140
C/T 6 × 8 240841
φ 69 · H 90
top opening diameter 69
full capacity 140ml

Coffee

Coffee Measuring Spoon



M-12SV

C/T48 716223
W 96 • D 53 • H 35
full capacity 12g



M-12-MB

C/T48 716247
W 96 • D 53 • H 35



M-12CP

C/T48 716230



M-12C

C/T48 716674
W 85 • D 55 • H 40
full capacity 12g



M-12WD

C/T48 716667
W 100 • D 57 • H 40
full capacity 12g



Canister



MCN-200R

C/T24 413672
φ 99 • H 142
top opening diameter 96
coffee grounds 200 g
full capacity 800ml



MCN-200B

413627



MCN-300R

C/T24 413689
φ 99 • H 189
top opening diameter 96
coffee grounds 300 g
full capacity 1,000ml



MCN-300B

413634



new

MCNT-S-B

C/T24 413849
W 120 • D 87 • H 110
top opening diameter 85
coffee grounds 130 g
full capacity 480ml



new

MCNT-M-B

C/T24 413856
W 130 • D 87 • H 150
top opening diameter 85
coffee grounds 190 g
full capacity 670ml



Just shake it, and make foamed milk

A manual shaker milk frother. Fill the cup to the measurement mark with cold milk. Set up the filter and the upper and lower cups and shake well for about 20-30 seconds. This will make smooth, foamed milk for cappuccinos and lattes. By transferring the foam milk inside a microwave safe container and heating it up, you can enjoy it with hot drinks as well.



LS-70-OW

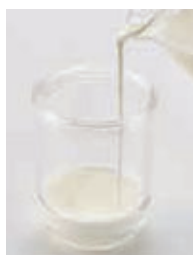
C/T24 402768
 φ 72 · H 173
 top opening diameter 68
 practical capacity - milk 70ml

(This can make foamed milk for 2 cups of cappuccino.)



LS-70-PC

402799



Pour cold milk up to the measurement marking.



Shake well for about 20-30 seconds.



Top off your favorite drink.



CZ-1BR

C/T24 402966
 φ 75 · H 221

Fluffed up milk in a blink of an eye

Microwave milk until it is 40-60°C. Use the following guidelines-500W approximately 50-60 seconds, 600W approximately 40-50 seconds. Tilt slightly and press the button, foaming the milk for 30-40 seconds. This will make smooth foamed milk for cappuccinos and lattes.



Milk measurement marking visible from the inside.



The lid can be used as an equipment holder.



Can be poured directly into a cup.



For microwave



CQT-45BR

C/T24 402959
 W 145 · D 105 · H 205
 top opening diameter 81
 practical capacity - milk 100ml
 (This can make foamed milk for 3 cups of cappuccino.)