



HARIO

2026 Since 1921

ISO 9001/14001

HARIO

'HARIO' means 'King of Glass.'

Founded in 1921, we have been making high quality products for more than a century.



HARIO Glass®

Natural Materials

「HARIO Glass®」 is a heatproof glass material made by HARIO Co., Ltd. from 100% natural minerals. It is the only heat-resistant glass produced entirely in Japan by HARIO Co., Ltd. , known for its exceptional thermal durability.

MADE IN JAPAN

Contents

How to use this catalogue	P. 4 ~ 5
V60 20th Anniversary	P. 6 ~ 7
COFFEE	P. 9 ~ 37
Titanium Series	P.38 ~ 39
Walnut Wood Series	P.40 ~ 41
Olive Wood Series	P.42 ~ 43
HARIO COLORS	P.44 ~ 47
Simply HARIO	P.48 ~ 49
Crafts Science	P.50 ~ 51
HARIO outdoor	P.52 ~ 53
Zebrang	P.54 ~ 55
TEA	P.56 ~ 65
DRINK	P.66 ~ 73
COOK	P.74 ~ 85

Notes Regarding the Catalog

- The information in this catalog is current as of February 1, 2026.
- Please note that product specifications may change without notice for quality improvements
- The colors and patterns of products shown in the catalog may differ slightly from actual products.
- Unauthorized reproduction or reprinting is strictly prohibited.

How to read product information



Newly released items have the following tag: **new**

Items with order quantity settings display the following line: **Order quantity: 1 C/T**

Measurement Symbols:

- Capacity: mL
 - Width: mm
 - Depth: mm
 - Height: mm
 - Diameter: mm
 - Opening diameter: mm
 - C/T: Number of items in one carton
- The listed JAN code number is only the last 6 digits of the barcode. The first seven digits are always 4977642.

Product Color Codes	
W: White	PGR: Pale Grey
B & W: Black & White	DGR: Dark Grey
B: Black	GR: Grey
MB: Matte Black	GJ: Gray Beige
T: Transparent	MG: Metallic Grey
TW: Transparent White	BR: Brown
TB: Transparent Black	CBR: Chocolate Brown
TR: Transparent Red	AB: Amber
TPR: Transparent Pink	SV: Silver
TG: Transparent Green	HSV: Hairline Silver
TBU: Transparent Blue	TSV: Titanium Silver
TY: Transparent Yellow	OV: Olive Wood
TPU: Transparent Purple	WN: Walnut
TRI: Tricolore	N: Natural
NJ: Rainbow	ML: Milk
SG: Smoky Green	CM: Caramel
PR: Smoky Pink	TF: Truffle

Usage markings Primary usage is shown

 熱湯用 For use with boiling water	 電子レンジ用 Can be used in a microwave	 直火用 Can be used on an open flame/gas stove
 オーブン用 Can be used in the oven	 直火不可 Cannot be used on an open flame/gas stove	 IH用 Can be used with induction heating

Product Capacity Indications

- Pots: Practical capacity when used for coffee or tea
- Microwave cookware: Practical capacity for actual use
- Glasses / Storage containers: Full capacity

Material Indications

Material composition of each component (plating and coating are not indicated)
 NB: For product series with the same materials, only the first item in the series shows material information



The V60 Dripper.

Loved by professional baristas and coffee enthusiasts across the world since its release in 2005, the V60 celebrated its 20th anniversary last year.

2026

With its iconic design and precision craftsmanship in the pursuit of freedom in coffee brewing, the V60 continues to evolve and inspire coffee lovers, new and old.



Next V60



HARIO V60



COFFEE DRIPPER

The V60 coffee dripper, recognized worldwide.

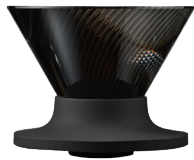
The V-shaped cone paper filter features a deep layer of coffee grounds, and since the hot water poured over the grounds flows toward the apex of the cone, it effectively extracts the rich flavor of the beans.

V60 Dripper NEO

Flow faster, Brew freer.



NEO's unique rib design minimizes off-flavors while achieving a more balanced, clean cup. Featuring 72 delicate ribs that converge into 9 at the base, this proprietary structure (utility model registered) ensures water flows uniformly across the entire surface. This results in rapid extraction, producing a clean, balanced cup.



new

V60 Dripper NEO 01
VDN-01-B

C/T48 088658
φ 108 · H86mm
Opening diameter top: 108mm
1 ~ 2cups

Materials : Body : PCT resin
Holder : Silicone rubber

"2026 iF DESIGN AWARD"

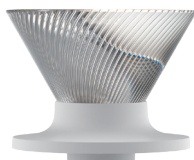
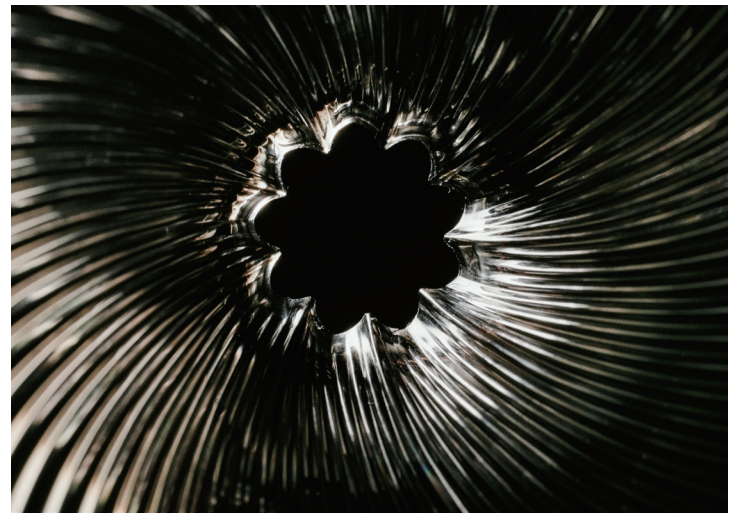


new

V60 Dripper NEO 02
VDN-02-B

C/T48 088665
φ 128 · H103mm
Opening diameter top: 128mm
1 ~ 4cups

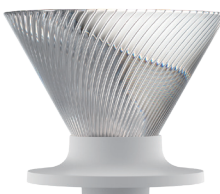
"2026 iF DESIGN AWARD"



new

V60 Dripper NEO 01
VDN-01-T

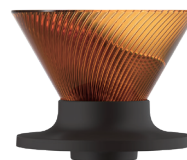
C/T48 088740
φ 108 · H86mm
Opening diameter top: 108mm
1 ~ 2cups



new

V60 Dripper NEO 02
VDN-02-T

C/T48 088757
φ 128 · H103mm
Opening diameter top: 128mm
1 ~ 4cups



new

V60 Dripper NEO 01
VDN-01-AB

C/T48 088764
φ 108 · H86mm
Opening diameter top: 108mm
1 ~ 2cups



new

V60 Dripper NEO 02
VDN-02-AB

C/T48 088771
φ 128 · H103mm
Opening diameter top: 128mm
1 ~ 4cups

HARIO × **tritan™**
 MADE IN JAPAN from eastman

Bringing more peace of mind and comfort to your daily life.



**Shatter-resistant and heat-resistant.
 A Tritan V60 clear dripper you can use with
 confidence for years to come.**

This V60 clear dripper is made from Tritan, a material known for its excellent heat resistance and impact strength.

Eastman Tritan is a material whose safety has been verified by regulatory agencies around the world.

Because this is something you'll use every day, we're committed to delivering a product designed with your safety and peace of mind as our priority.



new

V60 Coffee Dripper Tritan 01
 VDTA-01-T

C/T48 002883
 W115 · D100 · H82mm
 Opening diameter top: 95mm
 1 ~ 2cups
 Materials : Body : PCT resin
 2007 Good Design Award winner



new

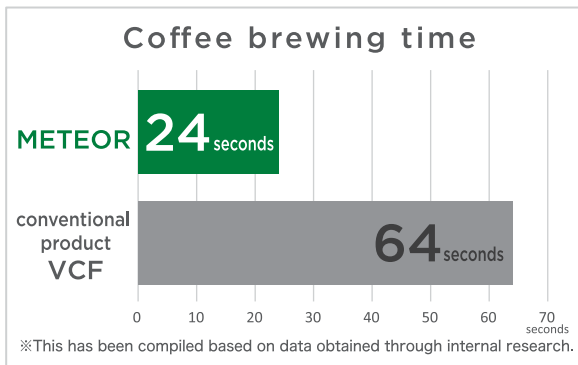
V60 Coffee Dripper Tritan 02
 VDTA-02-T

C/T48 002890
 W137 · D116 · H102mm
 Opening diameter top:116mm
 1 ~ 4cups
 2007 Good Design Award winner



Paper Filters for Specialty Coffee

The METEOR series features polylactic acid (PLA) to achieve a significantly faster extraction speed. PLA, a plant-derived bioplastic, is less prone to clogging than conventional paper filters and allows water to flow through smoothly. This ensures a faster, more uniform extraction, reducing overall brewing time. Experience a new way to brew with high-speed filtration that supports efficient extraction without compromising the coffee's delicate aroma and flavor.



High-Speed Filtration

Achieves an extraction speed approximately 3 times faster than standard V60 paper filters (based on internal testing).

Brewing Conditions

Dripper used : Immersion Coffee Dripper SWITCH
 Coffee grounds: 20g medium grind
 Water volume: 240mL
 Water temperature: 93° C
 Add 240mL of water, steep for 2 minutes, then press the switch to brew.
 Measure the time at the end of brewing.

Ingredients: Paper, Abaca, Polylactic Acid (PLA)

Abaca is a plant belonging to the banana family. Its strong, flexible natural fibers offer excellent liquid permeability. PLA is an eco-friendly, biodegradable biomass plastic that can be broken down by microorganisms. Known for its high safety profile in the human body, it is also utilized in medical materials such as absorbable sutures.



50
Sheets

V60 Coffee Paper Filter METEOR 01
 VCF-01-50-MT
 C/T12 731936
 1 ~ 2 cups



50
Sheets

V60 Coffee Paper Filter METEOR 02
 VCF-02-50-MT
 C/T12 731929
 1 ~ 4 cups



A sliding box that opens and closes by sliding sideways.



V60 Dripper SUIREN

A customizable coffee dripper that reinvents the V60's iconic "spiral ribs."



V60 Dripper SUIREN
VDSU-02-TB

C/T24 031371
W130 / D125 / H108mm
1-4 cups

Includes dripper holder

Materials: Ribs: PCT resin
Ring/dripper holder: Polypropylene



V60 Dripper SUIREN Black & White
VDSU-02-B&W

C/T24 031623
Includes dripper holder



V60 Dripper SUIREN Tricolor
VDSU-02-TRI

C/T24 031616
Includes dripper holder



V60 Dripper SUIREN NIJI (Rainbow)
VDSU-02-NJ

C/T24 031647
Includes dripper holder



You can remove the dripper holder and place the dripper directly on the server.



12 ribs can be attached.
(Removable)

The dripper holder ensures stability even when used to brew on smaller cups and mugs.



Seven rib colors are available, allowing you to customize your dripper to your liking. Each dripper uses 12 ribs.



SUIREN 6 ribs set
Transparent Pink
RIB-6-TPR

C/T12 × 4 031661
W24 / D18 / H115mm
Materials: PCT resin



SUIREN 6 ribs set
Transparent Red
RIB-6-TR
031531



SUIREN 6 ribs set
Transparent Blue
RIB-6-TBU
031548



SUIREN 6 ribs set
Transparent Yellow
RIB-6-TY
031555



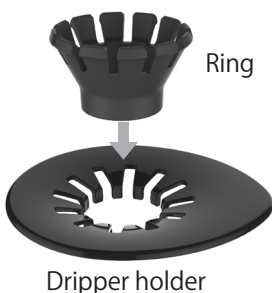
SUIREN 6 ribs set
Transparent Green
RIB-6-TG
031562



SUIREN 6 ribs set
Transparent Purple
RIB-6-TPU
031579



SUIREN 6 ribs set
Transparent white
RIB-6-TW
031586



Ring

Dripper holder



SUIREN Ring Set
(White)
VDSU-RST-W

C/T24 031654
W120 / D105 / H34mm
(When in use)
Materials: Polypropylene

SUIREN Ring Set
(Black)
VDSU-RST-B

031609



Discover the hidden depths of hand-brewed coffee.

The "Pegasus Series" for trapezoidal paper filters. With its dual small outlets designed for a slow, steady pour, this dripper is the perfect companion for those beginning their hand-brewing journey.



PEGASUS DRIPPER



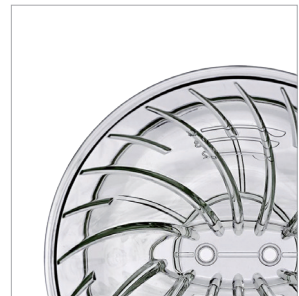
Integrated measuring marks for coffee grounds.
*PED-01,02,03-T



A convenient viewing window to monitor your brew.



Designed for direct brewing into thermal bottles.



Spiral ribs for optimal bloom and dual small outlets for effortless consistency.



Pegasus Dripper 01
PED-01-T

C/T 48 730861
W112 / D100 / H69mm
Opening diameter top: 94mm
1-2 cups
Materials: AS resin



Pegasus Dripper 02
PED-02-T

C/T 48 730878
W126 / D111 / H87mm
Opening diameter top: 111mm
2-4 cups



Pegasus Dripper 03
PED-03-T

C/T 36 730885
W151 / D134 / H113mm
Opening diameter top: 134mm
4-7 cups



new
Pegasus Dripper 01 Black
PED-01-B

C/T 48 732407
W112 / D100 / H69mm
Opening diameter top: 94mm
1-2 cups
Materials: Polypropylene



new
Pegasus Dripper 02 Black
PED-02-B

C/T 48 732414
W126 / D111 / H87mm
Opening diameter top: 111mm
2-4 cups



new
Pegasus Dripper 03 Black
PED-03-B

C/T 36 732421
W151 / D134 / H113mm
Opening diameter top: 134mm
4-7 cups



A large handle that provides a secure grip.
A dual-knob lid that's easy to grip and open.
A space-saving vertical design.

This coffee server is designed with a focus on "ease of everyday use."



PEGASUS SERVER



Easy-to-remove lid knob.



When turned upside down, the lid serves as a simple drip tray.



A handle design that allows for various grips.



A large, easy-to-grip handle.



Pegasus Server 300
PES-01-B

C/T 24 022621
W141 · D90 · H117
Opening diameter top: 85mm
Practical capacity :300mL
1 ~ 2cups
Microwave-safe with the lid on
Materials:
Body:Heatproof glass
Lid · Handle/Polypropylene



Pegasus Server 600
PES-02-B

C/T 24 022638
W156 · D108 · H150
Opening diameter top: 92mm
Practical capacity :600mL
2 ~ 5cups
Microwave-safe with the lid on



Pegasus Server 1000
PES-03-B

C/T 24 022645
W161 · D118 · H185
Opening diameter top: 92mm
Practical capacity :1,000mL
2 ~ 8cups
Microwave-safe with the lid on

* The price of paper filters is not fixed.



100 枚

Pegasus Coffee Paper Filter 01W
PEF-01-100W

C/T 100 730809
1 ~ 2cups



100 枚

Pegasus Coffee Paper Filter 02W
PEF-02-100W

C/T 100 730823
2 ~ 4cups



100 枚

Pegasus Coffee Paper Filter 03W
PEF-03-100W

C/T 80 730847
4 ~ 7cups



100 枚

Pegasus Coffee Paper Filter 01M
PEF-01-100M

C/T 100 730816
1 ~ 2cups



100 枚

Pegasus Coffee Paper Filter 02M
PEF-02-100M

C/T 100 730830
2 ~ 4cups



100 枚

Pegasus Coffee Paper Filter 03M
PEF-03-100M

C/T 80 730854
4 ~ 7cups

No pre-soaking required—just pour hot water once.
 Makes two cups in about 40 seconds. Even on busy mornings,
 anyone can easily brew delicious coffee in no time.

The “Easy Coffee Pot 1st” is designed to be easy to use, even for beginners. There’s no need to let the grounds steep—simply pour hot water once to consistently achieve the same great taste every time. The server features measurement markings, so you can see the amount of coffee at a glance. It comes with a guide to help you brew the perfect cup, so even first-time users can enjoy it with confidence.



No steeping required—just pour once.



Microwave-safe.



Compact storage.



Perfect for café au lait, too.



new

Order quantity : 1C/T

Easy Coffee Pot 1st
 OCP-40-B

C/T24 091924
 W116 · D116 · H187mm
 Opening diameter top : 100mm
 Practical capacity : 400mL

Materials:
 Body:Heatproof glass
 Band:Polypropylene
 Dripper:Silicone rubber



A coffee mug for savouring the aromatic note.

A coffee mug with a tapered rim, reminiscent of a wine glass. Its shape encapsulates the aroma, allowing you to savour the freshly brewed coffee's fragrance more richly.

MILK



new

Note MUG
NMG-360-ML

C/T48 088788
W124 / D95 / H81mm
Opening diameter top: 80mm
Full Capacity: 360mL

Materials: Porcelain

CARAMEL



new

Note MUG
NMG-360-CM
088795

TRUFFLE



new

Note MUG
NMG-360-TF
088801

CERAMIC COATING



The Ceramic Coating Series keeps your freshly brewed coffee tasting great.

The interior of the tumblers, mugs, and pots is coated with ceramic.

This helps minimize the metallic odor often associated with stainless steel, allowing you to enjoy the fresh taste of your coffee for longer. They are stain-resistant and easy to clean.

The stainless steel vacuum-insulated construction keeps your drink at the perfect temperature.



This is a twist-off cap that is designed so it doesn't touch your nose or lips when you drink.



You can place the dripper on top and brew directly.



new

Double-Walled Thermal Tumbler with Ceramic Coating
CTF-350-W

C/T24 221932

W74 · D77 · H149mm

Opening diameter top : 74mm

Practical capacity : 350mL

Materials : Body /Stainless steel
Lid/Polypropylene · Silicone rubber



new

Double-Walled Thermal Tumbler with Ceramic Coating
CTF-350-B

221949



Features convenient measurement markings so you know exactly how much to brew.

Thanks to the ceramic coating, it has a smooth, porcelain-like texture.



Double-Walled Mug with Ceramic Coating
CMG-350-W

CMG-350-B

C/T24 221826
W124 · D89 · H103mm
Opening diameter top : 85mm
Practical capacity : 350mL
Materials : Body /Stainless steel
Lid/PCT resin
Handle: Polypropylene

221833

Double-Walled Mug with Ceramic Coating
CMG-470-W

CMG-470-B

C/T24 221840
W124 · D89 · H128
Opening diameter top : 85mm
Practical capacity : 470mL
Materials : Body /Stainless steel
Lid/PCT resin
Handle: Polypropylene

221857



Thanks to the ceramic coating, it has a smooth, porcelain-like texture.

The lid can be taken apart into upper and lower sections, making it easy to clean.



Double-Walled Pot with Ceramic Coating
CHP-600-W

CHP-600-B

C/T12 221864
W145 · D95 · H191mm
Opening diameter top : 62mm
Practical capacity : 600mL
Materials : Body /Stainless steel
Lid · Handle/Polypropylene · ABS resin ·
Silicone rubber · Stainless steel

221871

Double-Walled Pot with Ceramic Coating
CHP-800-W

CHP-800-B

C/T12 221888
W145 · D97 · H230
Opening diameter top : 62mm
Practical capacity : 800mL
Materials : Body /Stainless steel
Lid · Handle/Polypropylene · ABS resin ·
Silicone rubber · Stainless steel

221895

Filter-in Coffee Bottle



Cold Brewed Coffee Making iced coffee is super easy with HARIO's Cold Brew Coffee Filter-in Bottle.

Just add coffee and water.
Put the ground coffee in the strainer and attach the filter top. Place the spout on top of the bottle and gently pour in water. Put the stopper in the spout and gently shake the bottle to start the extraction.
Now just refrigerate your drink for approximately 8 hours, and enjoy your cold brew.



A strainer that can be separated into upper and lower sections. The upper part is designed to serve as a lid for the lower strainer.



A mesh filter exclusively for ground coffee is used. It helps with brewing cold coffee.



You can pour it right in.



Filter-in Coffee Bottle
FIC-70-PGR

C/T24 038417
W87 · D84 · H300mm
Opening diameter top : 71mm
Finished capacity : 650mL
5cups

Materials:
Body: Heatproof glass
Spout · Cap: Silicone rubber
Strainer frame : Polypropylene
Mesh: Polyester



Filter-in Coffee Bottle
FIC-70-B

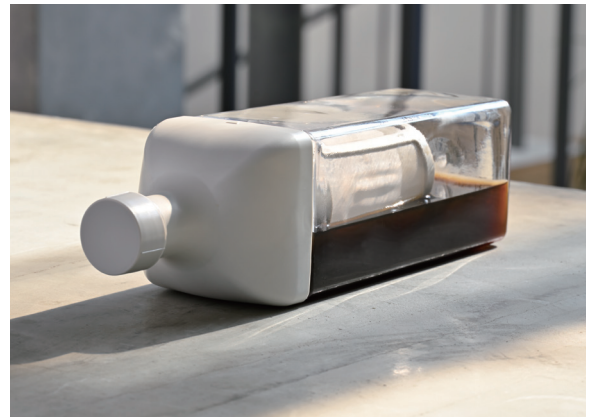
037441



KA-KU Coffee Bottle

The Ka-Ku Bottle is perfect for your favourite cold brew coffee.

The bottle shape allows you to easily store your beverages sideways without spilling anything, and with the large size you can make more of your favourite cold brew in one go.
Easy to clean thanks to the removable parts.



tritan™
from eastman

KA-KU Coffee Bottle
KAC-110-PGR

C/T24 730199
W90 · D90 · H320mm
Opening diameter top : 85mm
Finished capacity : 1,000mL 8 cups

Materials:
Body: PCT resin
Spout · Cap · Strainer frame : Polypropylene
Mesh: Polyester
Packing: Silicone rubber



Durable and easy-to-pour cold brew pitcher made of Tritan.
Cold Brew Coffee Pitcher RISE

Includes a strainer for brewing cold brew coffee. Perfect for outdoor use, as it is hard to break. The wide mouth and removable bottom strainer make cleaning easy.

tritan™
 from eastman



Cold Brew Coffee Pitcher RISE
 CBR-12-B

C/T18 165052
 W142 / D108 / H300mm
 Opening diameter top: 108mm
 Finished capacity: 840mL / 7 cups

Materials:
 Body: PCT resin
 Lid, strainer frame: Polypropylene
 Lid packing: Silicone rubber
 Mesh: Polyester





Cold Brew Coffee Pot

You can make iced coffee using just coffee grounds and water. Pour water in small amounts so that all the grounds are moistened, and drizzle it in a circular motion. Once you've finished pouring the water, let it steep in the refrigerator for about 8 hours, and it's ready to serve.

* The photo is for illustrative purposes only. When using this product, coffee grounds will enter the strainer.



Fill with water up to the band.



An easy-to-hold handle.



The bottom of the strainer comes off, making it easy to wash.



Mini Cold Brew Coffee Pot
MCPN-7-B

C/T24 143371
W138 · D94 · H208mm
Opening diameter top: 88mm
Finished capacity: 600mL 5cups

Materials:

Body: Heatproof glass
Lid · Handlebar tape · Strainer frame:
Polypropylene
Mesh: Polyester



Cold Brew Coffee Pot
MCPN-14-B

C/T24 143388
W138 · D94 · H294mm
Opening diameter top: 88mm
Finished capacity: 1,000mL 8cups



Keep things simple; the touch panel only features a power button and extraction button.



Shower-style pouring.

The MUGEN Coffee Maker comes pre-programmed with a pour-over brewing recipe.

Based on the V60 MUGEN One-Pour Dripper released in 2021.
Replicates the recommended recipe of pouring 300mL of hot water in about 20 seconds.
Designed with a focus on compactness.



Uses V60 MUGEN dripper and a beaker server.

MUGEN Coffee Maker EMC-02-B

C/T6 704022
W117 / D190 / H311mm
Dripper: 1-2 cups
Server practical capacity: 300mL

Materials:

Body: Polypropylene, iron, acrylic resin,
silicone rubber, PBT-GF30
Server: Heatproof glass
Dripper: AS resin, polypropylene

AC100V 50/60Hz 600W

Pursuing the flavor of pour over.

The V60 "Coffee King 2" is designed to replicate the flavor of a true pour-over brew. It is programmed to recreate the ideal conditions for delicious coffee, allowing you to enjoy the taste of V60 pour-over coffee at home with a consistent and reliable extraction, every time.



V60 Coffee Maker



V60 "Coffee King 2" Coffee Maker EVCM2-5TB

C/T2 403215
W165 / D223 / H318mm
Minimum capacity 300mL;
maximum capacity 750mL
2-5 cups
Includes measuring spoon and VCF-02W
40 filter paper.

Materials:
Body: Polypropylene, silicone rubber, nylon,
ABS resin, stainless steel
Server body: Heatproof glass
Dripper: PCT resin
Server lid, handle band, spoon:
Polypropylene
AC100V 50/60Hz 750W



Simple operation: Power
→ Cup Button → Start



21-outlet showerhead
covers all grounds evenly



After the 3-minute brew
time, the keep-warm
functions keeps the
temperature steady for
30 minutes.

Temperature when
starting to brew

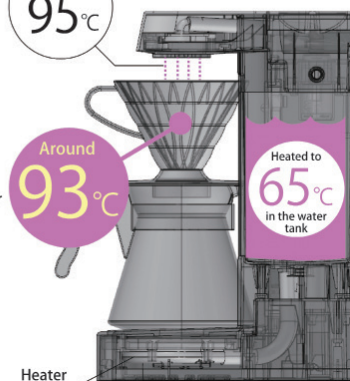
Around
95°C

Temperature
inside the dripper

Around
93°C

Heated to
65°C
in the water
tank

Heater



High-Temperature Extraction System

Water in the tank is gradually heated to 65° C through circulation, then passes through the heater to the spout. The water dispensed from the spout reaches approximately 95° C, delivering an ideal brewing temperature of around 93° C in the dripper. The coffee grounds are pre-infused with hot water for about 30 seconds, followed by a full drip process completed in approximately 3 minutes. The water tank features a double-wall design with excellent heat retention.



Easily reproduce any recipe with the POLARIS

Track your brew progress at a glance and improve your recipe consistency.

When brewing coffee, you can create different flavors by adjusting the amount of coffee depending on the origin and roasting level of the beans, or by adjusting the amount of hot water poured, but calculations can be complicated.

Polaris Mode uses percentage indicators to simplify the brewing process. You don't need to calculate the amount for each pour manually, making it easier to quickly reproduce your ideal recipe.

- Polaris Mode: Supports ideal extraction with ratio and percentage display.
- Ratio function: Register your coffee-to-water ratio and auto-display the required water amount.
- Percentage display: See the percentage poured toward your goal.
- Auto Timer: Starts when you begin pouring.
- Classic Mode: Displays only time and weight.
- Color options: Black / White



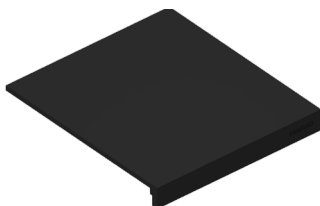
Coffee Scale POLARIS
CST-2000-B

C/T20 027206
W127 / D165 / H27mm
Range: 0.1-2000g
Max. measuring time: 9m 59sec

Materials:
Body: ABS resin, acrylic resin
Anti-slip: Silicone rubber
Batteries: DC4.5V 3xAA batteries
(Batteries are included for testing purposes)



Coffee Scale POLARIS
CST-2000-W
027107



Coffee Scale POLARIS Silicone Cover
C-CST-B

C/T20 027237
Materials: Silicone rubber





V60 Drip Scale

What you need to make great coffee.

It measures both extraction weight and brew time simultaneously — essential for consistent hand-drip coffee.



It's slim, so it stores away compactly.



You can measure both the extraction volume and the extraction time simultaneously.



V60 Drip Scale VSTN-2000B

C/T20 021907

W120 / D190 / H29mm

Measuring range: 2-2000g

Max. count-up time: 99m 59sec

Materials:

Body: ABS resin

Anti-slip: Silicone rubber

Batteries: 2x AAA batteries

"2013 iF DESIGN AWARD"

Electric Kettle Lyra



New electric drip kettle with enhanced functionality

The Electric Kettle Lyra is packed with features. 1° C incremental temperature control, one-touch boiling function, stopwatch, timer, lightweight body, a comfortable handle and a slim spout for precision pouring. Elegant and simple design blends into daily life naturally. Lyra helps you achieve your ideal coffee time.



Ultra-lightweight design

Approx. 0.53kg body weight. One of the lightest electric coffee kettles available. Reduces strain while pouring.



Delicate pouring with a fine spout

The long, curved gooseneck spout lets you pour water close to your coffee grounds for a precise, barista-level pour.



Easy-to-grip handle

Ergonomically designed handle fits various grip styles. Rounded edges provide a comfortable, natural grip.



Protective cushion

A silicone rubber cushion on the bottom of the kettle softens impact when placed on a surface.



Slim body

Its slender body lowers the center of gravity, helping to maintain pouring stability.



Multifunctional

Stopwatch / Timer / Keep Warm Function / ° C / ° F Switchable / One-Touch Boil / Custom Temperature Presets / Mute Mode, etc.



Electric Kettle Lyra
ECK-80-B

C/T6 704060
W280 / D157 / H210mm
Opening diameter top: 77mm
Minimum capacity 300mL; maximum capacity 800mL

Materials:

Kettle body, spout: Stainless steel
Handle: ABS resin
Lid: Polypropylene, stainless steel
Lid grip: Polypropylene
Lid packing, cushion: Silicone rubber
Power plate: ABS resin, tempered glass, silicone rubber
AC100V 50/60Hz 1200W



Electric Kettle Lyra
ECK-80-W

704053



Heat level adjustable with a dial for brewing control.



Glass and heater are separable for easy cleaning.

Experience the joy of a traditional syphon, now in an electric form

Recreates the charm of traditional syphon brewing using electricity — no flame required. The compact size (roughly the size of a piece of A5 paper) makes this syphon perfect for your kitchen.



Electric Coffee Syphon ECA-3-B

C/T6 041035
W180 / D150 / H270mm
Practical capacity: 360mL, 3 cups
Includes 50 paper filters.

Materials:
Upper- and lower bowl: Heatproof glass
Heater body cover: Polypropylene
Heating plate: Aluminium
Lid: Polypropylene
Handle: Phenol resin
Filter set: Stainless steel

AC100V 50/60Hz 350W



Enjoy the taste of freshly ground coffee right at home.

A propeller-style coffee grinder that allows you to adjust the grind size by varying the grinding time. It features a safety design that prevents operation unless the lid is securely closed. The power cord can be neatly stored in the base of the unit.



You can grind coffee beans with the push of a button.



You can store the cord in the bottom of the product.



Electric Coffee Grinder "Switch" EMCS-5-W / EMCS-5-B

C/T12 708372 / 708389

W90 / D92 / H175mm

Coffee beans approx. 70g

Materials:

Body, lid: Polypropylene, ABS resin, stainless steel

Hopper, blade: Stainless steel

Blade fastener: Nylon

AC100V 50/60Hz 150W



A ceramic burr coffee grinder that conveys the warmth of wood.

Available in two sizes depending on your needs.

The ceramic burr is less likely to generate frictional heat, helping to bring out the full flavor of the coffee beans.

You can adjust the grind to your desired coarseness and enjoy the aroma of freshly ground coffee.



Coffee Mill Cube
CMCB-2

C/T12 708679
W160 / D85 / H160mm
Ground coffee: 24 g / 2 cups

Materials:

Body, handle grip: Natural wood
Burr: Ceramic
Lid: Methacrylic resin
Shaft, handle: Stainless steel
Hopper: Polypropylene



Coffee Mill Cube
CMCB-4

C/T12 708686
W160 / D85 / H195mm
Ground coffee: 48 g / 4 cups



Stainless steel burr coffee grinder.

Adjust your grind size from medium-fine to coarse for hand drip brewing along 90-step increments. Equipped with a high-hardness stainless steel burr that provides a consistent grind size. The shaft is stabilized with bearings to reduce wobbling, ensuring a smooth grinding experience. The body offers a comfortable grip for easy grinding.



It can be disassembled for cleaning.



The stainless steel burr ensures a consistent grind size.



Grind settings offer 90 adjustment steps.



Comes with a non-slip silicone rubber cover.



Coffee Grinder PRO CGP-2-B

C/T12 708693
W180 / D55 / H216mm
Opening diameter top: 66mm
Ground coffee: 24 g / 2 cups

Materials:

Lid, body: Aluminium
Handle, lid grip, shaft, bearing, burr,
spring, washer: Stainless steel
Handle grip: Walnut
Anti-slip cover, anti-slip base, lid grip
packing: Silicone rubber



180 grind levels



Slim, compact design



Power button located on the side

SHIZUKA Electric Coffee Grinder – Quiet with a slim design

Adjustable from fine (for home espresso) to coarse (for French press).
 (180 grind settings)
 High-hardness stainless steel burr ensures consistent ground size.
 Low-speed motor keeps it quiet.
 Comes with a silicone lid to reduce microfine dust.



Electric Coffee Grinder SHIZUKA ECG-3-B

C/T2 708754
 W71 / D103 / H271mm
 Coffee beans 100g

Materials:
 Body, container, lid: Aluminium
 Burr: Stainless steel
 Lens: Heatproof glass
 Cover, anti-slip: Silicone rubber
 AC100-240V 50/60Hz 150W



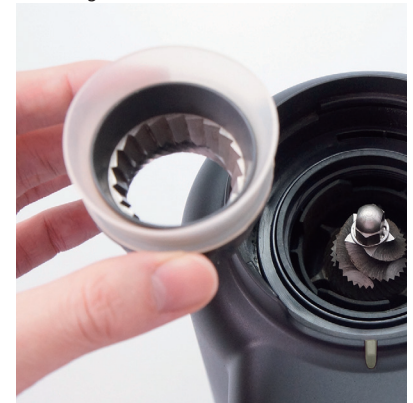
Pressing the lid from creates air pressure, pushing fine coffee particles out of the hopper and into the receptacle.



Comes with a static electricity removal function to prevent coffee grounds from scattering.

V60 Electric Coffee Grinder Compact N - Static removal and built-in cleaning functions

Adjustable for medium-fine to coarse grind; ideal for pour over brewing (39 grind levels). Pressing the lid pushes air inside to force fine particles down into the container. The cleaning function and static reduction allow for easy cleanup.



Conical stainless steel burr.



V60 Electric Coffee Grinder Compact N EVCN-8-B

C/T2 708563
W130 / D185 / H312mm
Coffee beans 100g

Materials:

Body: Polypropylene, polyacetal, stainless steel, polyamide
Burr: Stainless steel
Hopper, container: AS resin
Hopper lid: Silicone rubber, stainless steel
AC100V 50/60Hz 150W



Dual-function for grinding and weighing.



Save up to 4 grind/weight presets.

A scale-equipped coffee grinder that auto-measures the amount of coffee grounds

Grinds coffee while automatically measuring the set weight.

You can also detach the scale and use it independently as a drip scale.

Flat burr ensures a wide range of grind settings and uniform grind.

Digitally-controlled grind size adjustable in 50 steps. From fine grind for home espresso to coarse grind for French press.



The scale charges automatically when connected to the main unit.



Electric Coffee Grinder Libra (with Scale) EGSN-8-MG

C/T2 704077

W155 / D215 / H365mm

Hopper capacity: Coffee beans approx. 200g

Container capacity: Coffee beans approx. 100g

Materials:

Body: ABS resin, aluminium alloy, silicone rubber, stainless steel

Burr: Stainless steel

Hopper, hopper lid: AS resin

Scale: ABS resin, aluminium alloy, silicone rubber

Container lid, silicone pad: Silicone rubber

Container: Heatproof glass

AC100V 50/60Hz 150W



V60 Titanium Series

Enjoy a lifetime of premium coffee experiences with lightweight, durable metal gears.



The Titanium Lightweight, portable, and designed to excel in the rugged outdoors —from campsites to mountain peaks. Highly resistant to deformation, heat, and moisture, these are enduring pieces of gear you will cherish forever. Crafted to preserve the beans' true profile without any metallic aftertaste, our meticulous finish and minimalist aesthetic bring a touch of luxury to every brew, whether at home or in the wild.



new

V60 TITANIUM DRIPPER
VDTI-01-TSV

C/T12 723597
W127 / D105 / H74mm
Opening diameter top: 105mm
1-2 cups

Materials:
Body: Titanium
Holder: Silicone rubber



new

V60 TITANIUM DRIPPER
VDTI-02-TSV

C/T12 723603
W140 / D120 / H88mm
Opening diameter top: 120mm
1-4 cups



new

V60 DRIP KETTLE BUONO TITANIUM
VKBTI-90-TSV

C/T6 732209
W315 / D125 / H138mm
Opening diameter top: 72mm
Practical capacity: 600mL

Materials:
Body: Titanium
Lid grip: Natural wood
Handle cover: Silicone rubber



new

SINGLE-LAYER TITANIUM MUG
SMTI-35-TSV

C/T24 732216
W123 / D89 / H100mm
Opening diameter top: 89mm
Max. capacity: 350mL

Materials: Titanium

Walnut Wood Series

Walnut wood is known for its elegant grain and use in luxury furniture.

This series combines walnut, glass and other high-quality materials to create stylish coffee tools.

Each piece is handcrafted, offering a warm, artisanal feel.

Enjoy a special moment with these elegant items.





The back of the lid features an engraving.



**Coffee Server Walnut
VBS-60-WN**

C/T24 022683
W153 / D113 / H113mm
Practical capacity: 600mL

Materials:
Body: Heatproof glass
Lid: Walnut



**V60 Glass Dripper Walnut
VDG-02-WN**

C/T24 724020
φ 120 / H95mm
1-4 cups

Materials:
Body: Heatproof glass
Holder: Walnut
Holder inner ring: Silicone rubber



**Coffee Grinder Walnut
MCG-2-WN**

C/T12 708631
W164 / D81 / H215mm
Practical capacity: 30g coffee

Materials:
Body, handle grip: Walnut
Burr: Ceramic
Lid: Methacrylic resin
Shaft, spring: Stainless steel
Handle: Aluminium
Hopper: Polypropylene
Burr holder, adjustment knob, washer: Nylon
Lower packing: Silicone rubber
Anti-slip: Urethane resin



**Drip Stand Walnut
WDS-1-WN**

C/T12 022690
W160 / D140 / H158mm

Materials:
Base: Walnut
Frame: Stainless steel
Anti-slip: Urethane resin



**Drip Stand Set Walnut
WDS-1006-WN**

C/T6 027008
W153 / D113 / H233mm (When set)

Dripper: 1-4 cups
Server practical capacity: 600mL
Includes V60 measuring spoon and VCF-02W 40 filter paper.

Materials:
Glass: Heatproof glass
Base, holder, lid: Walnut
Holder inner ring: Silicone rubber
Frame: Stainless steel
Anti-slip: Urethane resin



**Drip Kettle Walnut
DKW-600-WN**

C/T12 027367
W320 / D140 / H145mm

Opening diameter top: 70mm
Practical capacity: 600mL

Materials:
Body, lid: Stainless steel
Handle: Stainless steel, walnut
Lid grip: Walnut

Olive Wood Series

Olive wood spice stockers & coasters.

Spice Stocker Set of 6 for storing your spices or coffee beans.

Doubles as elegant kitchen decor and functional storage.



Practical capacity: 90mL



Coffee beans: 30g



Olive Wood Spice Stocker 6 pieces
SPS-6-OV

C/T6 010987

W355 / D65 / H115mm

Container: ϕ 47 / H96mm

Opening diameter top: 45mm

Practical capacity: 90mL, coffee beans 30g

Materials:

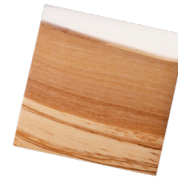
Body: Heatproof glass

Rack, lid: Olive wood

Lid packing: Silicone rubber



Coasters made with olive wood and resin.
Each one is unique due to natural wood variation.
Please enjoy their individual character.



Olive Wood Coaster
COT-1-OV

C/T72 010994
W100 / D100 / H10mm

Materials: Olive wood, epoxy resin



V60 Glass Dripper Olive Wood 01
VDGR-01-OV

C/T24 736689
φ 120 / H77mm
Opening diameter top: 97mm
1-2 cups

Materials:
Body: Heatproof glass
Holder: Olive wood
Holder inner ring: Silicone rubber



V60 Glass Dripper Olive Wood 02
VDGR-02-OV

C/T24 736696
φ 120 / H95mm
Opening diameter top: 115mm
1-4 cups



Coffee Server 600 Olive Wood
VCWN-40-OV

C/T24 019324
W177 / D118 / H104mm
Opening diameter top: 88mm
Practical capacity: 400mL

Materials:
Body: Heatproof glass
Lid, handle: Olive wood, stainless steel
Band: Stainless steel
Screw: Stainless steel, brass



Coffee Server 600 Olive Wood
VCWN-60-OV

C/T24 019331
W182 / D128 / H121mm
Opening diameter top: 88mm
Practical capacity: 600mL



Drip Pot Wood Neck
DPW-1

C/T12 331723
φ 95 / H168mm
Opening diameter top: 93mm
Practical capacity: 240mL
1-2 cups
Includes V60 measuring spoon.

Materials:
Body: Heatproof glass
Grip, string stopper, handle: Acacia wood
String: Leather
Filter: Cotton
Frame: Stainless steel
Measuring spoon: Polypropylene



Drip Pot Wood Neck
DPW-3

C/T12 331730
φ 110 / H195mm
Opening diameter top: 101mm
Practical capacity: 480mL
3-4 cups
Includes V60 measuring spoon.



V60 Coffee Mill Olive Wood N
MCWN-2-OV

C/T12 707436
W167 / D85 / H215mm
Coffee beans 30g
Washable burr

Materials:
Hopper cover: Porcelain
Burr: Ceramic
Lid, shaft, spring, handle: Stainless steel
Hopper: Polypropylene
burr holder: adjustment knob, washer: Nylon
Lid packing, upper packing: Silicone rubber
Body, handle grip: Olive wood



V60 Olive Stand Set
VSS-1206-OV

C/T6 021259
W156 / D160 / H248mm
Includes V60 measuring spoon and VCF-02M 100 paper filters.

Materials:
Dripper, server body, lid: Heatproof glass
Stand: Olive wood
Measuring spoon: Polypropylene
Lid packing: Silicone rubber

HARIO COLORS

A colorful series of heatproof glass by HARIO.

The teapots, coffee servers and cold brew pitchers feature mesh-filter lids for easy brewing.

The tea and coffee servers can also be used as coffee carafes by placing a dripper on top.

Other items in the series include stackable mugs, canisters, half-color glasses, and night carafes—brightening up your table.





HARIO COLORS Stacking Mug Cup
HCM-300-AB

C/T24 219953
W117 / D90 / H70mm
Opening diameter top: 90mm
Max. capacity: 300mL
Materials: Heatproof glass



HARIO COLORS Stacking Mug Cup
HCM-300-GR

219946



HARIO COLORS Tea & Coffee Server
HCT-600-AB

C/T24 140868
W150 / D118 / H125mm
Opening diameter top: 80mm
Practical capacity: 600mL
Materials:
Body: Heatproof glass
Lid, filter: Polypropylene
Lid packing: Silicone rubber



HARIO COLORS Tea & Coffee Server
HCT-600-GR

140851



HARIO COLORS Canister
HCN-400-AB

C/T24 414587
φ 80 / H143mm
Opening diameter top: 70mm
Practical capacity: 400mL
Materials:
Body, lid: Heatproof glass
Lid packing: Silicone rubber



HARIO COLORS Canister
HCN-400-GR

414570



HARIO COLORS Cold Brew Pitcher
HCB-800-AB

C/T24 414693
W136 / D87 / H235mm
Opening diameter top: 80mm
Practical capacity: 800mL
Materials:
Body: Heatproof glass
Lid, filter: Polypropylene
Lid packing: Silicone rubber



HARIO COLORS Cold Brew Pitcher
HCB-800-GR

414686



HARIO COLORS

The HALF COLOR GLASS is a new addition to the HARIO COLORS Series, featuring a simple shape and easy-to-use size. The glasses are compatible with other HARIO COLORS items and filter-in carafes and feature a handy 360mL capacity when filled up.



HARIO COLORS HALF COLOR GLASS
HCHG-360-AB

C/T24 800403
 ø 85 / H90mm
 Opening diameter top: 85mm
 Max. capacity: 360mL
 Materials: Heatproof glass



HARIO COLORS HALF COLOR GLASS
HCHG-360-GR

800397



HARIO COLORS HALF COLOR GLASS
HCHG-360-G

800410



< Night Carafe >

Color Glass Series – Night Carafe.

Includes both a carafe and a glass—perfect for bedside hydration.

The Night Carafe is also great for everyday drinks and looks beautiful on your dinner table.



HARIO COLORS Night Carafe
HCNC-600-G

C/T12 800342
φ 85 / H220mm
Opening diameter top: 55mm
Practical capacity: 600mL
Materials: Heatproof glass



HARIO COLORS Night Carafe
HCNC-600-GR

800335



Simply HARIO

Waking up refreshed
To the scent of lush foliage
A crisp morning breeze
Beginning your day with Simply HARIO

A relaxing afternoon
Smooth tunes playing
Soft rays of sunlight pouring in
Soothing my feelings with Simply HARIO

The night falls
A sky full of stars surrounds a waning moon
A quiet and calm moment
A moment to yourself with Simply HARIO

Recharging yourself on a busy day
A moment you cherish
Simply beautiful, Simply HARIO.

A series that combines simple beauty and functionality to help you recharge in your everyday life. Made from 100% natural minerals, Simply HARIO features the refined beauty and utility of heat-resistant glass. Its minimal, distraction-free design invites a moment of pause in your busy day — a chance to reflect and find quiet calm. A pure beauty that enhances precious time. Spend a rich and fulfilling life with Simply HARIO.





Awarded the 2022 JIDA Design Museum Selection



Glass Goblet
S-GG-300

C/T24 151468
 φ 80 / H130mm
 Opening diameter top: 80mm
 Max. capacity: 300mL
 Materials: Heatproof glass



V60 Glass Brewing Kit
S-VGBK-02-T

C/T12 151376
 W146 / D120 / H195mm (When set)
 Server practical capacity 600mL
 1-4 cups
 Includes V60 measuring spoon and VCF-02W
 40 filter paper.
 Materials:
 Server, dripper: Heatproof glass
 Dripper holder: PCT resin
 Measuring spoon: Polypropylene



Glass Coffee Maker
S-GCM-40-W

C/T24 151383
 W132 / D110 / H164mm
 Opening diameter top: 100mm
 Practical capacity: 400mL
 Materials:
 Body: Heatproof glass
 Dripper: Stainless steel
 Band: Silicone rubber



Crafts Science



HARIO, the only domestic manufacturer of heatproof glass in Japan, started out over a century ago as a producer of scientific glassware.

To meet the high standards of precision, durability, and usability required in laboratory settings, HARIO continuously honed their craft and established a trusted reputation among researchers around the world.

To celebrate 100 years, HARIO presents "Crafts Science," a new series that embodies the quality of its scientific roots. Combining craftsmanship and precise processing techniques with scientifically inspired functional design, this drinkware line expresses HARIO's legacy.

Coffee is Science

From grinding beans to boiling water, and of course the brewing process itself...

Every factor, including weight, temperature, and speed, can drastically affect the final taste.

What matters most is a clean pouring spout, stable base and handle, and a precise and convenient shape.

Rooted in scientific thinking for lab equipment, HARIO's design pursues the ideal brew.

Born from 100 years of craftsmanship and science:

Crafts Science drinkware.





**Beaker
BK-200**

C/T24 010314
W83 / D78 / H89mm
Opening diameter top: 78mm
Practical capacity: 200mL
Materials: Heatproof glass



**Beaker
BK-500**

C/T24 010321
W105 / D99 / H121mm
Opening diameter top: 99mm
Practical capacity: 500mL
Materials: Heatproof glass



**Tall Beaker Server
TBV-300**

C/T24 010369
W115 / D72 / H135mm
Opening diameter top: 72mm
Practical capacity: 300mL
Materials: Heatproof glass



**Tall Beaker Server
TBV-500**

C/T24 010376
W130 / D85 / H150mm
Opening diameter top: 85mm
Practical capacity: 500mL
Materials: Heatproof glass



**Beaker Server
BV-300**

C/T24 151420
W125 / D89 / H105mm
Opening diameter top: 89mm
Practical capacity: 300mL
Materials: Heatproof glass



**Beaker Server
BV-600**

C/T24 151437
W130 / D90 / H152mm
Opening diameter top: 90mm
Practical capacity: 600mL
Materials: Heatproof glass



**Beaker Server & Dripper Set
BVD-3012-GR**

C/T12 164758
W137 / D114 / H240mm (When set)
Server practical capacity 600mL
1-4 cups
Includes V60 measuring spoon and VCF-02W 40
filter paper.
Materials:
Server: Heatproof glass
Dripper: Ceramic
Measuring spoon: Polypropylene



For those who want to enjoy high-quality coffee indoors and outdoors.



V60 Metal Dripper
O-VDM-02-HSV

C/T12 040014
W145 / D120 / H90mm, Φ 120mm
1-4 cups

Materials:
Body: Stainless steel
Holder: Silicone rubber

NB: Does not include a measuring spoon.



V60 Metal Coffee Grinder
O-VMM-1-HSV

C/T24 040021
W130 / D47 / H160mm
Opening diameter top: 47mm
Coffee beans 17g
Washable burr

Materials:
Lid, container: Stainless steel
Body: Stainless steel, polypropylene, polyacetal, iron, PTFE
Handle: Stainless steel, polypropylene
Burr: Ceramic
Band: Silicone rubber



V60 Metal Drip Kettle Buono
O-VKB-70-HSV

C/T12 040038
W215 / D115 / H140mm
Opening diameter top: 71mm
Practical capacity: 500mL

Materials:
Body, lid, handle: Stainless steel
Lid grip: Phenol resin



V60 Metal Coffee Server
O-VCSM-50-HSV

C/T24 040045
W170 / D126 / H120mm, Φ 78mm
Practical capacity: 500mL

Materials:
Body, lid, handle: Stainless steel



V60 Metal Stacking Mug
O-VSM-30-HSV

C/T24 040069
W116 / D87 / H85mm
Opening diameter top: 87mm
Max. capacity: 320mL

Materials: Stainless steel
Stackable



This convenient bag holds all necessary brewing tools.
Two beginner-friendly drip sets available.



V60 Outdoor Coffee Bag
O-VCB-B

C/T18 018013
W330 / D290 / H170mm
Capacity: 14L

Materials:
Fabric: Polyester 100%
Resin parts: Polyacetal



Ample storage
space



Extra, convenient
storage behind the cover



Removable
shoulder straps

Outdoor set for beginners



V60 Outdoor coffee basic set
O-VOCB

C/T4 018020

Set contents:
O-VCB-B/O-VDM-02-HSV/
VCF-02-40M/O-VCSM-50-HSV/
O-VKB-70-HSV

Full set for enjoying your coffee outdoors



V60 Outdoor coffee full set
O-VOCF

C/T4 018037

Set contents:
O-VCB-B/O-VDM-02-HSV/
VCF-02-40M/O-VCSM-50-HSV/
O-VKB-70-HSV/O-VMM-1-HSV/
O-VSM-30-HSV x 2



Zebrang



New Coffee Experience

Zebrang

Zebrang blends HARIO's knowledge of coffee and cooking tools to enhance your coffee experience anywhere—from home to the outdoors. Enjoy rich, stylish coffee moments that strengthen your daily connections.



Fine spout ideal for hand-drip
Removable handle for compact storage
Enjoy full-scale coffee brewing, anywhere, anytime



Keeps drinks at the perfect temperature for longer.
220mL capacity—perfect for one cup.
Stackable when lid is removed.



Zebrang Nomad Drip Kettle
ZB-NDK-300MB

C/T24 4573533861425
W200 / D83 / H110mm
Opening diameter top: 79mm (With handle attached)
Practical capacity: 300 mL
Materials:
Body, handle, lid, screws: Stainless steel
Lid grip: Natural wood
Storage bag: Polyester



Zebrang Compact Thermal Tumbler
ZB-CTT-220MB

C/T24 4573533861609
W80 / D80 / H99mm
Opening diameter top: 78mm (With lid attached)
Practical capacity: 220 mL
Materials:
Body: Stainless steel
Outside: Polyester resin coating
Inside: Ceramic coating
Lid: Polypropylene
Packing: Silicone rubber



Leather Band Holder Natural/Brown/Black
ZB-LHH-N / ZB-LHH-BR / ZB-LHH-B

C/T25 4573533861470 / 4573533861487 / 4573533861494
 W66 / D56 / H43mm (When attached)

Materials:
 Body: Cowhide
 Button (Natural): Silver nickel
 Button (Brown): Brass
 Button (Black): Black nickel



V60 Flat Dripper 01 Zebrang
ZB-VDF-01B

C/T36 4573533860725
 W121 / D92 / H70mm
 Opening diameter top: 92mm
 1-2 cups

Materials:
 Body: Silicone rubber
 Holder: Polypropylene



V60 Flat Dripper 02 PLUS Zebrang
ZB-VDFP-02B

C/T36 4573533860732
 W132 / D125 / H88mm
 Opening diameter top: 125mm
 1-4 cups



Zebrang Coffee Mill Stainless Cutter
ZB-CMS-B

C/T24 4573533860916
 W140 / D55 / H165mm
 Opening diameter top: 48mm
 Coffee beans 20g, 2 cups

Materials:
 Lid, hopper: Polypropylene
 Handle grip, handle cap, outer burr holder,
 adjustment knob, container: ABS resin
 Handle, washer, shaft, spring, burr, Outer Burr,
 Inner Burr, Grind adjustment ball: Stainless steel
 Inner burr base / Zinc alloy
 Bearing: SUJ
 Band: Silicone rubber



Measure Drip Pot Zebrang
ZB-MDP-35B

C/T24 4573533860572
 W177 / D78 / H128
 Opening diameter top: 78mm
 Practical capacity: 350mL

Materials: PCT resin
 NB: For use with already hot water. This
 item cannot be used to heat water in the
 microwave/stove/open flame/etc.



V60 Paper Filters 01W Zebrang
ZB-VCF-01-50W

C/T300 4573533860749
 1-2 cups
 50 filters



V60 Paper Filters 02W Zebrang
ZB-VCF-02-50W

C/T200 4573533860589
 1-4 cups
 50 filters

Brew For TEA



Teapot with a V-shaped bottom strainer.

The V-shaped design of the strainer allows you to extract every last drop of tea, ensuring the fullest flavor in every cup.



Draw out the full flavor of the tea



Easy-to-clean strainer



A strainer with a self-supporting base



new

Tea Pot V
TPV-45-T

C/T24 088818
W142 / D100 / H107mm
Practical Capacity: 450mL

Materials:

Body,Lid: Heatproof glass
Strainer: Polypropylene
Strainer Mesh: Polyester resin



new

Tea Pot V
TPV-45-TB
088825





CLEAR BREW POT



The lid is completely detachable.



Stackable design for space-saving storage
—perfect for cafe and professional use.



Microwave-safe
(please remove the lid and strainer before heating).

A teapot designed for effortless, one-handed pouring—no need to hold the lid.

Combining heatproof glass and stainless steel, this teapot offers a simple yet sophisticated look. The extra-large strainer allows tea leaves to expand fully, unlocking their rich aroma and flavor. Featuring a wide-mouth design, the glass body is exceptionally easy to clean. For added convenience, simply remove the lid and strainer to reheat your tea in the microwave.



new

CLEAR BREW POT
TPF-60-HSV

C/T24 088832
W170 / D130 / H136mm
Opening diameter top: 95mm
Practical capacity: 600mL

Materials:
Body: Heatproof glass
Lid, Strainer: Stainless Steel
Hinge Parts: Polypropylene

Tea Pot Chanomaru



Pour directly through the filter-equipped lid.



A rounded silhouette designed for optimal tea leaf movement.



Large, ergonomic handle for a secure grip.

A perfect cup, effortlessly brewed.

The rounded body encourages tea leaves to dance, while the integrated strainer lid ensures a smooth pour. Sized perfectly for one or two, it brings ease and delight to your daily tea ritual.



new

Tea Pot CHANOMARU
TPM-38-W

C/T24 022829
W140 / D104 / H85mm
Opening diameter top: 82mm
Practical capacity: 380mL
Lid-on microwaving OK

Materials:

Body: Heatproof glass
Lid, filter: Polypropylene
Lid packing: Silicone rubber



new

Tea Pot CHANOMARU
TPM-38-B

022836



Tea Pot MULTEA

Experience the true taste of Japanese tea made from loose leaves, with this easy-to-use Japanese tea pot that allows you to measure the amount of tea leaves and hot water.

Properly measuring the amount of tea leaves and hot water is essential to brewing great tea. This teapot includes guides for both, making it easy even for beginners to brew delicious tea. It is versatile, allowing for hot, cold, and tea bag brewing.



Measurement guide under the lid: holds approximately 2 teaspoons of tea leaves.



The pot itself has easily visible markings for measuring hot water.



Lid with built-in filter allows direct brewing in the pot.



Wide mouth design: easy to clean and pour. It doesn't have a tea strainer, ensuring easy cleaning.



Tea Pot MULTEA
OTPM-40-PGR
C/T24 091900
W164 / D116 / H112mm
Practical capacity: 400mL
Materials:
Body: Heatproof glass
Lid, handle: Polypropylene
Mesh: Polyester



Fits microwaves over 19cm in height.



Fits in fridge door pockets over 11cm deep.

A perfectly sized pot that fits neatly in both the microwave and refrigerator.

Brewing barley tea the traditional way requires boiling and cooling, which takes time. This pot lets you simply microwave water and add a tea bag to extract strong barley tea in a short time. Dilute with water and enjoy deep barley tea flavor. No flames needed—safe and easy.

Includes tea strainer in the lid. Can brew various tea types, hot or cold. Compact 1,000mL capacity. Fits in fridge door pockets—ideal for daily use.



Easy Microwave Barley Tea Pot Mugichan
XMP-1000-W

C/T24 748385
W103 / D150 / H183mm
Practical capacity: 1,000mL

Materials:
Body: Heatproof glass
Lid, filter: Polypropylene
Packing: Silicone rubber



Easy Microwave Barley Tea Pot Mugichan
XMP-1000-DGR

748392

Transparent, like glass. A new material that is lightweight and shatter-resistant



Bringing beauty and durability to your everyday.

For peace of mind and comfort in your daily life.

HARIO × **tritan™** is a series made with Tritan™, known for its excellent clarity, durability, and resistance to breaking.

What is **tritan™**
 from eastman

01 High heat resistance

Safe for boiling water and dishwasher/dryer use.



02 Impact resistance

Unlikely to break even if dropped, and resistant to cracks and scratches.



03 Excellent clarity

Glass-like transparency allows you to clearly see your beverage.

04 Safe material **BPA FREE**

Tritan by Eastman is recognized safe by regulatory bodies around the world.

05 Odor-resistant

Doesn't retain strong beverage odors.





A transparent teapot made from lightweight, shatter-resistant Tritan.

Just add tea leaves directly to the pot to allow them to open fully and extract deep flavor. The spout pours smoothly to the last drop. Made of materials that are resistant to odor transfer, the filter is removable and easy to wash. In addition, the oval shape allows it to be stored neatly.



Tea Pot Shou
 FIK-45-T
 C/T48 038639
 W184 / D102 / H96mm
 Practical capacity: 450mL
 Materials:
 Body, lid: PCT resin
 Mesh filter: Polypropylene



Tea Pot Asanoha
 FIK-45-AS
 C/T48 038646



Tea leaves can fully expand, drawing out deep flavor.



Odor-resistant for enjoying a variety of teas.



Lightweight and shatter-resistant.



Removable filter.



A cold brew tea pitcher made of Tritan, safe to use with boiling water and to wash in the dishwasher.

Cold Brew Tea Pitcher LILY

Made of durable PCT resin with beautiful transparency. Equipped with a handle and a clean-pour spout. Square shape allows for stable, horizontal storage. Safe for boiling water and dishwasher.



Cold Brew Tea Pitcher Lily
 CBL-12-PGR

C/T18 165045
 W142 / D108 / H300mm
 Opening diameter top: 108mm
 Practical capacity: 1,200mL

Materials:
 Body: PCT resin
 Lid, strainer frame: Polypropylene
 Lid packing: Silicone rubber
 Mesh: Polyester

Durable and easy-to-pour cold brew pitcher made of Tritan. Cold Brew Coffee Pitcher RISE

Includes a strainer for brewing cold brew coffee. Perfect for outdoor use, as it is hard to break. The wide mouth and removable bottom strainer make cleaning easy.



Cold Brew Coffee Pitcher RISE
 CBR-12-B

C/T18 165052
 W142 / D108 / H300mm
 Opening diameter top: 108mm
 Finished capacity: 840mL / 7 cups

Materials:
 Body: PCT resin
 Lid, strainer frame: Polypropylene
 Lid packing: Silicone rubber
 Mesh: Polyester





Filter-in Bottle Portable
FIBP-40-SPR

C/T24 037830
φ 74 / H240mm
Opening diameter top: 65mm
Practical capacity: 400mL
Materials:
Body, spout: PCT resin
Bottle cap, filter: Polypropylene
Packing: Silicone rubber
2019 Good Design Award winner



Filter-in Bottle Portable
FIBP-40-SG

037847
2019 Good Design Award winner



Ka-Ku Bottle
KAB-120-W

C/T24 037571
W90 / D90 / H320mm
Opening diameter top: 85mm
Practical capacity: 1,200mL
Materials:
Body: PCT resin
Spout, bottle cap, filter: Polypropylene
Packing: Silicone rubber



Ka-Ku Bottle
KAB-120-SPR

037595



Ka-Ku Bottle
KAB-120-SG

037588



Order quantity: 1C/T
JUSIO Water Pitcher
FPJ-11-W

C/T24 232075
W110 / D100 / H245mm
Opening diameter top: 100mm
Practical capacity: 1,100mL
Materials:
Body: PCT resin
Lid: Polypropylene
Packing: Silicone rubber



Order quantity: 1C/T
JUSIO Water Pitcher
FPJ-11-SG

232099



Ka-Ku Coffee Bottle
KAC-110-PGR

C/T24 730199
W90 / D90 / H320mm
Opening diameter top: 85mm
Finished capacity: 1,000mL / 8 cups
Materials:
Body: PCT resin
Spout, bottle cap, strainer frame: Polypropylene
Mesh: Polyester
Packing: Silicone rubber





HEATPROOF GLASS

HARIO Glass®

MADE IN JAPAN

Sustainable materials

Drink



The "Slim Sake Tokkuri" is designed to highlight the inherent brilliance and purity of glass.

This heat-resistant decanter beautifully enhances the color and clarity of Japanese sake, adding a touch of grace to the very act of pouring. Microwave-safe for effortless heating, it is perfect for enjoying crisp, chilled sake in the summer or soul-warming hot sake in the winter. Experience the finest flavors of the season all year round.



new
Heatproof glass
Slim Sake Tokkuri
TKS-180-T

C/T24 836921
φ 59 / H126mm
Opening diameter top: 49mm
Practical capacity: 180mL
Materials: Heatproof glass



new
Heatproof glass
Slim Sake Tokkuri
TKS-360-T

C/T24 836938
φ 65 / H174mm
Opening diameter top: 54mm
Practical capacity: 360mL



< Donguri Carafe >

Handcrafted by skilled artisans, these glass sake vessels feature a charming, rounded silhouette. The innovative double-wall structure ensures the exterior remains comfortable to the touch when serving hot sake, while preventing condensation with chilled sake—preserving its elegant appearance at all times.



new

Donguri Carafe
DKF-1-GR

C/T24 836945
φ 86 / H102mm

Opening diameter top: 30mm

Practical capacity: 180mL

Materials: Heatproof glass



new

Donguri Carafe
DKF-2-GR

C/T24 836952
φ 107 / H127mm

Opening diameter top: 33mm

Practical capacity: 360mL

Materials: Heatproof glass





< Cool Carafe >

A luxurious sake carafe, handmade by artisans. It features a built-in ice pocket to keep your drink chilled without diluting it. Available in two colors for an elegant experience.



Cool Carafe N
CKF-2T-G

C/T12 528741
W110 / D110 / H223mm
Opening diameter top: 50mm
Practical capacity: 360mL
Materials: Soda glass



Cool Carafe N
CKF-2T-GR
528758



HARIO Crystal



HARIO Crystal Series

The HARIO Crystal series features a premium collection of Red Wine, White Wine, and Champagne glasses, alongside Rock glasses and Tumblers—all crafted from exquisite crystal.

Each wine glass features internal embossed lines; as you swirl the wine, these ridges increase aeration, allowing you to enjoy a "decanting effect" that unlocks the wine's full aroma and flavor.



new

HARIO Crystal Wine Glass Red
HRWR-440

C/T12 800533
φ 100 / H228mm
Opening diameter top: 56mm
Max. capacity: 440mL
Materials: Crystal Glass



new

HARIO Crystal Wine Glass White
HRWW-380

C/T12 800540
φ 90 / H222mm
Opening diameter top: 56mm
Max. capacity: 380mL
Materials: Crystal Glass



new

HARIO Crystal Champagne Glass
HRCG-230

C/T12 800557
φ 66 / H232mm
Opening diameter top: 46mm
Max. capacity: 230mL
Materials: Crystal Glass

HARIO Crystal Tumbler



HARIO Crystal Rock Glass



HARIO Crystal Series: Tumblers & Rock Glasses

Our Tumblers are perfectly sized for refreshing Highballs.

The Rock Glasses are designed with a wide diameter to accommodate large spherical ice balls.



new

HARIO Crystal Rock Glass
HRRG-400

C/T12 800564
φ 88 · H94mm
Opening diameter top: 75mm
Max. capacity: 400mL
Materials: Crystal Glass



new

HARIO Crystal Tumbler
HRLT-530

C/T12 800571
φ 81 · H141mm
Opening diameter top: 70mm
Max. capacity: 530mL
Materials: Crystal Glass



Water Jug Can / Long Can

Stylish heatproof glass water jug.

Elegant vertical lines emphasize the beauty of glass.
Heat-resistant glass does not retain odors or colors.
Perfect for everyday use, like herb- or fruit-infused water.



Water Jug Can
WJCA-750-HSV

C/T18 038653
W184 / D88 / H179mm
Opening diameter top: 79mm
Practical capacity: 750mL

Materials:
Body: Heatproof glass
Lid: Polypropylene, stainless steel
Packing: Silicone rubber



Water Jug Long Can
WJCA-1300-HSV

C/T18 038660
W184 / D88 / H277mm
Opening diameter top: 79mm
Practical capacity: 1,300mL



Double Wall Stack Glass Line
HWS-300-M

C/T24 800434
 φ 85 / H100
 Opening diameter top: 85mm
 Max. capacity: 300mL
 Materials: Heatproof glass



Double Wall Stack Glass Line (2 pcs)
HWS-4012-M

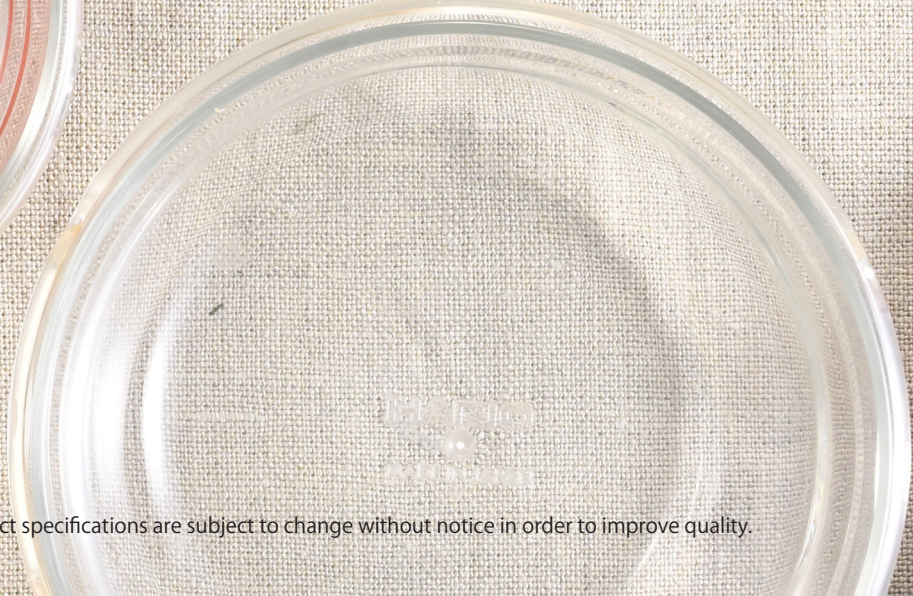
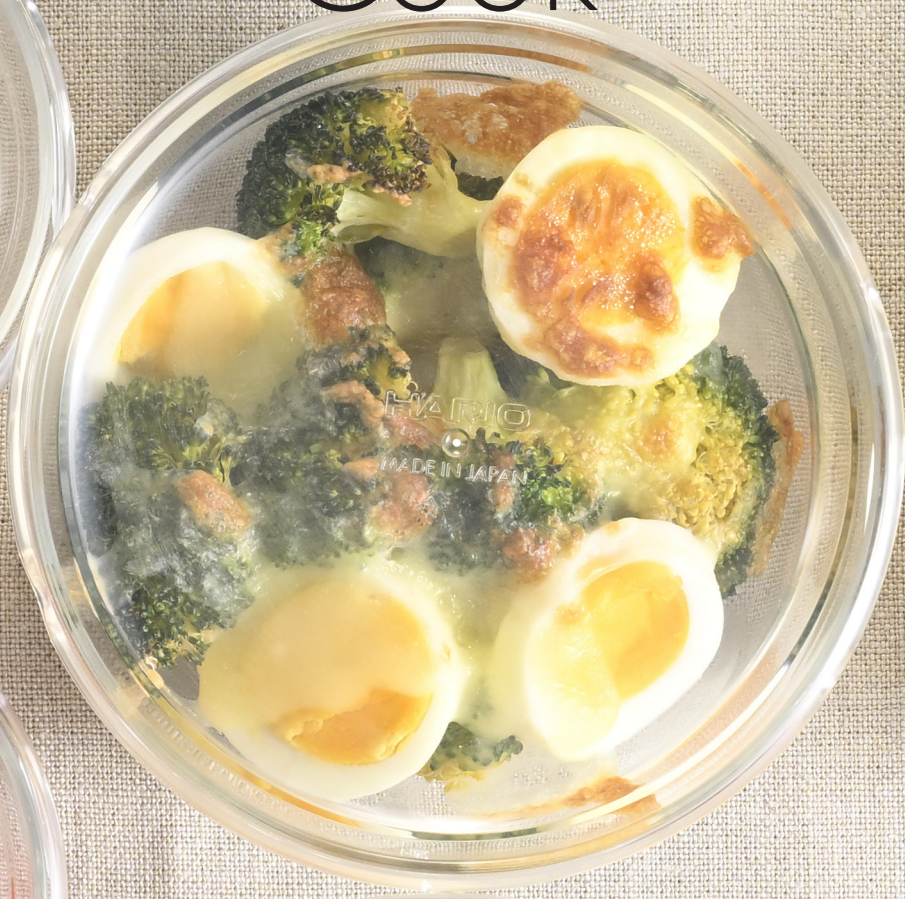
C/T12 800427
 φ 85 / H100
 Opening diameter top: 85mm
 Max. capacity: 300mL
 Materials: Heatproof glass

Beer-can-shaped heatproof glass mug.



Heatproof Glass Can
HGK-450-M
 C/T24 422452
 W107 / D73 / H132
 Opening diameter top: 66mm
 Max. capacity: 450mL
 Materials: Heatproof glass





Cook

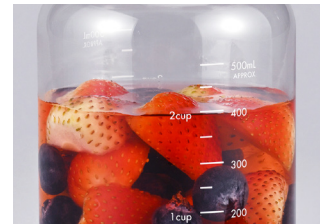




Microwave-safe with the lid on.



Pour directly without removing the lid.



Features convenient measurement markings.



Compact design fits perfectly on refrigerator shelves or in door pockets.

SLOWRA: Enriching your body, mind, and everyday life.

Designed with the themes of "slow living" and "well-being," the SLOWRA series invites you to embrace a lifestyle that cares for your body. From the preparation stage to the final sip, this collection adds a touch of comfort to your daily routine. Enjoy seasonal fruits, herbs, and wholesome ingredients easily and deliciously. Includes access to our original recipe site.



new

SLOWRA
Heatproof Glass Fruit Pot 500mL
SFP-500-W

C/T24 511385
W90 / D90 / H140mm
Opening diameter top: 73mm
Practical capacity: 500mL

Materials:

Body: Heatproof glass
Lid: Polypropylene
Packing: Silicone rubber



new

SLOWRA
Heatproof Glass Fruit Pot 1000mL
SFP-1000-W

C/T24 511392
W110 / D110 / H165mm
Opening diameter top: 73mm
Practical capacity: 1,000mL



new

SLOWRA
Heatproof Glass Fruit Pitcher 700mL
SFPI-700-W

C/T24 511408
W90 / D87 / H183mm
Opening diameter top: 82mm
Practical capacity: 700mL

Materials:

Body: Heatproof glass
Lid, Filter: Polypropylene
Packing: Silicone rubber



1way

Ideal for washing rice or vegetables



2way

Efficient draining and straining



3way

Versatile food preparation



4way

Microwave-safe



5way

Store leftovers directly with the lid on

5-in-1 Multi-Purpose Heatproof Glass Bowl with Lid and Strainer

From food prep and microwave cooking to storage, this versatile heatproof glass bowl set does it all. The high-performance strainer ensures excellent drainage and is designed to be microwave-safe when used together with the lid and bowl. Crafted from premium heatproof glass, the bowl resists stains and odors, while its elegant, minimalist design makes it perfect for serving directly at the dining table.



new

5-in-1 Heatproof Glass Bowl with Lid and Strainer 2200mL
MXPZ-2200-GJ

C/T8 421547
W216 / D221 / H123mm
Opening diameter top: 210mm
Max. capacity: 2,200mL

Materials:
Body: Heatproof glass
lid, Strainer: Polypropylene



Elegant enough to use as a serving dish



Perfect for draining edamame



Steaming in the microwave



Ideal for preparing "Salad Udon" (chilled noodle salads)



This series embraces seasonal rituals and the joy of adding a little extra care to daily life.

Crafted from heat-resistant glass, the items feature a transparent, simple design that balances beauty and functionality.





Microwave-safe with lid.



Contents are clearly visible; compact size.



**Glass Bowl
GXD-600**

C/T12 040106
 φ 156 / H132mm
 Opening diameter top: 156mm
 Practical capacity: 600mL
 Materials: Heatproof glass



**Glass Sauce Pot
GTP-500**

C/T24 040137
 W125 / D90 / H142mm
 Opening diameter top: 73mm
 Practical capacity: 500mL
 Materials:
 Body, lid: Heatproof glass
 Packing: Silicone rubber



**Glass Craft Storage Jar
GHB-1000**

C/T24 040113
 φ 110 / H165mm
 Opening diameter top: 73mm
 Practical capacity: 1,000mL
 Materials:
 Body, lid: Heatproof glass
 Packing: Silicone rubber



**Glass Craft Storage Jar
GHB-2000**

C/T24 040120
 φ 130 / H216mm
 Opening diameter top: 73mm
 Practical capacity: 2,000mL
 Materials:
 Body, lid: Heatproof glass
 Packing: Silicone rubber



**Glass Flower Vase
GK-200-T**

C/T24 040144
 φ 73 / H148mm
 Practical capacity: 200mL
 Materials: Heatproof glass



**Glass Flower Vase
GK-200-TB
040151**



**Glass Flower Vase
GK-200-AB
040168**



All-heatproof glass rice cooker (microwave use)

The ICHIZENYA Microwave Glass Rice Cooker is made entirely of heatproof glass. Cook your rice in the microwave. You can cook 0.5-1 cup of rice in approximately 10 minutes (based on 600W microwave).



ICHIZENYA Microwave Glass Rice Cooker XRCPN-1

C/T8 419254
W200 / D160 / H145mm
Opening diameter top: 150mm
0.5-1 cup of rice

Materials:
Body, lid: Heatproof glass
Ring: Silicone rubber



Steamed Yellowtail with Green Onions + Mizuna & Mushroom Ohitashi (Japanese salad)



The Essentials of Steamer Cooking



Cabbage Shumai (Dumplings) + Mushroom & Seaweed Soup



Cheesecake + Blueberry Sauce



Hamburger Steak + Ratatouille

Heatproof Glass Food Steamer

This innovative "Glass Seiro" steamer is crafted entirely from premium heatproof glass, both for the upper and lower sections. It is designed for ultimate convenience, allowing you to prepare two different dishes simultaneously in the microwave. The upper bowl features four precision-drilled steam holes for efficient cooking. Being made of heatproof glass, it is exceptionally easy to clean and maintains its pristine appearance. Includes an original recipe book.



Upper bowl features four steam holes.



Stackable two-tier design for simultaneous microwave cooking.



new

Heatproof Glass Steamer
GSM-2-OW

C/T12 991255
W204 / D167 / H145mm
Opening diameter top: 160mm
Lower Bowl Practical Capacity: 800mL
Materials:
Body, lid: Heatproof glass
lid: Polypropylene
Packing: Silicone rubber



Easily check on your oil with this compact pot

This compact and heatproof glass oil pot allows for easy viewing and storage. The mesh filter allows you to reuse your oil, making it eco-friendly and economical.



Glass Compact Oil Pot GOP-300-W

C/T24 414594
W146 / D104 / H120mm
Opening diameter top: 95mm
Practical capacity: 300mL

Materials:
Body: Heatproof glass
Strainer: Stainless steel
Lid, hinge: Polypropylene
Bottom holder: Silicone rubber



Stainless steel mesh strainer



Compact size



Wide-mouth spout for easy pouring



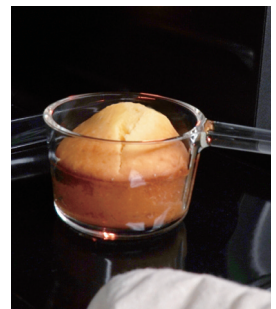
Economical and reusable

Ideal for side dishes and soups.

Safe for both microwave- and oven use. The pot features a handle for easy handling after heating, and the lid allows for storing the pot in the refrigerator.



Microwave-safe



Oven-safe



Glass Small Pot GKN-300-W

C/T18 419247
W189 / D110 / H75mm
Opening diameter top: 110mm
Practical capacity: 300mL

Materials:
Body: Heatproof glass
Lid: Silicone rubber



Easy-to-hold handle



Lid for storage



Easy dashi stock pot (microwave use)

The large strainer reaches all the way to the bottom for optimal extraction. Hook it onto the pot edge to get every last drop. The wide opening makes it easy to clean. Includes original recipes.



Dashi Pot
DP-600-W

C/T24 748378
W154 / D115 / H130mm
Opening diameter top: 105mm
Practical capacity: 600mL

Materials:
Body: Heatproof glass
Lid, strainer frame: Polypropylene
Strainer mesh: Polyester



Microwave-safe



Hang the strainer from pot edge for full dashi extraction.



Flip the lid to use as a strainer rest.

Compact pickling pot

Made of heatproof glass, making it odor- and stain-resistant. Perfect for pickling. Includes a weighted silicone-covered cobblestone. The slim design easily fits in your fridge door or on your shelves.



Tsukemono Glass Slim
TGS-800-T

C/T12 097896
φ 102 / H135mm
Opening diameter top: 96mm
Max. capacity: 800mL

Materials:
Body: Heatproof glass
Lid: AS resin
Lid packing, cobblestone cover: Silicone rubber
Cobblestone: Borosilicate glass



Comes with weight cover.



Lid removable for microwave use.



Slim shape fits fridge door pocket.

ポウルップ
Bowlup!

耐熱ガラス保存ボウル



A 3-in-1 versatile glass bowl for cooking, serving, and storage.

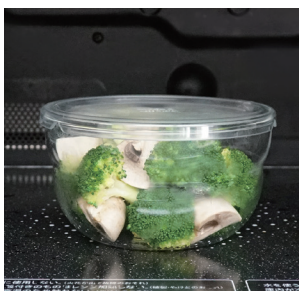
Streamline your cooking and make everyday meals easier. Experience maximum satisfaction with minimum effort. Bowlup! is a new type of storage bowl designed to bring smart efficiency to your modern lifestyle.

**The Meaning Behind "Bowlup":
Bowl + Wrap ⇒ Up (Elevating your lifestyle)**

With both the lid and bowl being fully transparent, you can check the contents instantly from the top or side. This helps you remember what's inside, reducing forgotten ingredients and contributing to food loss reduction.

The transparent lid is made from BPA-free, highly heat-resistant material for your peace of mind.





Microwave-safe with the lid on.



Oven and toaster oven safe (lid must be removed).



Minimalist design for easy cleaning.



Both lid and bowl are dishwasher-safe.



new

Bowlup
Heatproof Glass Storage Bowl – Clear
BLP-350-T

C/T36 423169
φ 112 / H62mm
Opening diameter top: 105mm
Max. capacity: 350mL

Materials:
Body: Heatproof glass
Lid: Polymethylpentene



new

Bowlup
Heatproof Glass Storage Bowl – Clear
BLP-650-T

C/T36 423176
φ 137 / H72mm
Opening diameter top: 130mm
Max. capacity: 650mL



new

Bowlup
Heatproof Glass Storage Bowl – Clear
BLP-1200-T

C/T36 423183
φ 167 / H82mm
Opening diameter top: 160mm
Max. capacity: 1,200mL